

The Community Leader

WE'RE ALL ABOUT GOOD NEWS

Redlands



SHORE THING: CARING FOR THE BAY THAT CONNECTS US

Moreton Bay is woven into everyday life in the Redlands. It's a place to fish at sunrise, paddle through quiet mangroves, swim on hot afternoons, or watch dolphins glide by. Its calm waters, seagrass meadows and mangrove edges support turtles, dugongs and hundreds of bird species, making it one of our community's most treasured natural playgrounds.

But our bay relies on us to protect it. Even something as small as discarded fishing line can cause serious harm, tangling around the legs, wings or beaks of seabirds, leaving them injured or unable to fly or eat. Keeping fishing spots tidy and taking all line and tackle home are among the simplest ways we can help.

This month, we're highlighting the incredible work of Pelican and Seabird Rescue, based in Thorneside (page 5). Their team responds to wildlife affected by entanglement and other hazards – a powerful reminder that our choices on the shoreline matter. And if you're curious about the remarkable migratory birds that visit our region, don't miss the feature on page 15 for a rundown on these fascinating annual visitors.

This issue marks three years of Redlands' Community Leader. Thanks go to our contributors, advertisers and our readers who allow us to capture the spirit of the Redlands each month. We hope you enjoy this issue, and if you've got good news, share it!

Pictured: Pelican and Seabird Rescue volunteers Jessie Steel, Don Meldrum and Sally George at Thorneside.



Thinking of Selling? Lets Talk!

Scan the QR code for your complimentary property report.

Courtney Brown | 0410 232 200



FROM THE BOARDROOM TO CARDBOARD: CEO DENNIS STARK TRADES COMFORT TO TAKE A STAND AGAINST HOMELESSNESS

BY ASHLEIGH HOWARTH

Golden Cockerel CEO Dennis Stark will swap comfort for concrete on June 18, joining other business leaders at the Vinnies CEO Sleepout to raise funds and awareness for Australians experiencing homelessness.

Encouraged to take part by a colleague involved with Vinnies, Dennis – who leads the Mount Cotton-based business – said the event quickly resonated with both his personal values and his company’s mission.

“When I looked into it, I realised it aligned really well with the Golden Cockerel purpose of enriching our community and it was something I could do to utilise my network of team members, suppliers, contractors and customers,” he said.

After participating in the Sleepout for the first time last year, Dennis learnt what it was like to sleep on the cold ground with only cardboard for insulation.

“I hardly slept so I had lots of time to think while rolling over what felt like every five minutes,” he said.

“It would be extremely hard to have to do it night after night by yourself in a less secure environment – constant fatigue and deterioration in physical and mental health could spiral badly.

“You realise a safe place to sleep is critical.

“I still remember the next morning getting up at 5:00am, packing up and heading off to work dead tired, stiff and looking for a coffee.”

This year’s event will be held at Roma Street Parkland on what is expected to be Brisbane’s coldest and longest night of the year.

Across Australia, over 122,000 people are experiencing homelessness including families impacted by the cost-of-living crisis, 17,000 children under 12, and a growing number of older women.

Many are living in cars, on the streets, or in unsafe housing.

For Dennis, one of the most powerful aspects of the Sleepout is hearing directly from people who have experienced sleeping rough.

“These people become the strongest ambassadors, which tells me how powerful an organisation like Vinnies can be – they are a force for good,” he said.

His fundraising efforts have also more than doubled this year, rising from \$11,637 in 2025 to surpassing his goal of \$20,000 this year.

Funds raised through the Sleepout support crisis accommodation,



Photo: Supplied.

meals, domestic violence services, and long-term housing solutions for those in need.

To donate or to register for the Sleepout, visit the Vinnies CEO Sleepout website.

HEALTHY EATING MADE EASY

Gourmet Meals
Since 1993

CELEBRATING 31 YEARS OF GOURMET MEALS

I ♥ ndis

HOME DELIVERY OF READY MADE MEALS

Mention the code word **INTRO** and receive one **FREE MEAL** of your choice.
New customers only, limit one per customer. Contact our office for minimum order requirements.

- ✔ Gluten Free
- ✔ Convenient ready-made frozen meals
- ✔ Tastes like home cooking
- ✔ Wholesome and nutritious
- ✔ Australian owned and operated
- ✔ Home delivered or available in stores

PICK UP ADDRESS: 46/2 15 BRISBANE ROAD, LABRADOR QLD 4215 | MONDAY TO FRIDAY 9:00AM - 4:00PM

Find us on facebook
Call now 1300 112 112
www.gourmetmeals.com.au

BATTERIES

MORE POWER LONGER LIFE

SERVING THE BAYSIDE FOR OVER 60 YEARS WITH QUALITY BATTERIES

Batteries that last and last

FREE BATTERY TEST

UP TO 50 MONTHS WARRANTY

MORE POWER. LONGER LIFE

CARS • TRUCKS • MOBILITY SCOOTERS • STOP START VEHICLES • MARINE • BIKES • CARAVANS • MOTORHOMES

WYNNUM BATTERIES

238 TINGAL RD (CRN BURKE ST) WYNNUM 4178 | 3396 3674 | www.wynnumbatteries.com.au

WYNNUM FRINGE RETURNS WITH ITS BIGGEST, BOLDEST PROGRAM YET!

Wynnum Fringe will return to Brisbane's bayside from 25 June to 12 July 2026, bringing its biggest and boldest program yet to Wynnum! Now in its seventh year, the award-winning festival will once again transform the precinct around the Augathella Spiegeltent on Bay Terrace into an energetic playground of comedy, live music, circus, cabaret and family entertainment.

The 2026 program features more than 200 performances, showcasing a mix of blockbuster acts, cult comedy favourites and emerging artists.

Comedy heavyweights Arj Barker, Luke McGregor, Mel Buttle and Matt Okine lead a stacked lineup, joined by Bradley McCaw's *The Music of Billy Joel*, and the *Wynnum Fringe Comedy Gala*.

One of this year's standout experiences is *In Pour Taste*, a new comedy and wine collaboration with Innocent Bystander. Created by award-winning comedians Ethan Cavanagh and Sweeney Preston, the show blends sharp humour with curated wine tastings in an intimate, high-energy setting.

The festival will also premiere one of its most ambitious productions to date: *Highway To Hell: The Rock 'N' Roll Circus*. Designed exclusively for Wynnum Fringe, the show transforms the Spiegeltent into a 1980s



Aussie pub, celebrating the golden era of Australian rock through a fusion of live music and circus. The production stars Wes Carr and Mahalia Barnes, backed by an all star band and world class circus artists.

The program also includes some familiar favourites, including *Dangerous Goods*, *Elixir Revived*, *Adults Only Magic Show*, *Party Animals*, *The Greatest Magic Show*, *Circus The Show*, *All Star Circus* and *The Rockin' 70s Singalong*.

New this year is The Lunchbox Theatre, a home for intimate and

offbeat works such as *Wynnum Watch!*, a comedic dive into the wonderfully chaotic world of local community Facebook pages. The festival will also host the inaugural *Brisbane Clown Festival*, curated by Andrew Cory and featuring a three-day lineup of local and interstate performers.

Alongside the performances, audiences can enjoy school holiday workshops, a rooftop container bar, food trucks and a pop-up wine experience, creating a lively social hub on Bay Terrace.

Tickets and the full program are available now at wynnumfringe.com.

CAPALABA SPORTS CLUB

WEDNESDAY
SCHNITZEL night

113 Ney Road, Capalaba
PH: 33903011
capalabasportsclub.com.au

\$16.90

\$4.50 TOPPING UPGRADE OPTION

SUNDAY ROAST NIGHT

Members **\$16⁵⁰**

2 ROAST OPTIONS AVAILABLE

Served with roast potato and pumpkin, steamed vegetables and gravy



LOCAL PRINTER

Thinking Printing?
Thinking Fast, Affordable, Local?

THINK

redland graphic printers

Our **state-of-the-art** digital machine is perfect for quick **SAME DAY PRINTING**, brilliant colour reproductions at the right price.

But that's not all we do!

Great service and unbeatable prices on:

- Business Cards
- Printed Stationery
- Brochures
- Graphic Design
- Banners
- Distribution
- Magnets
- Tradie Docket Books

Call us on 3286 1666

redlandgraphics.com.au
admin@redlandgraphics.com.au • 9/55 Shore Street, Cleveland Q 4163

Roof Leaking? Roof Inspection and Report from \$349



Our roofing services include:

- Repairing or replacing broken, cracked or slipped tiles
- Re-sealing and repointing ridge caps to improve stability and prevent leaks
- Fixing damaged valleys, flashings and roof penetrations
- Replacing rusted or corroded metalwork where required
- High-pressure roof cleaning to remove dirt, moss and lichen
- Treating mould and organic growth to slow regrowth
- Applying protective sealants or roof coatings
- Repainting roofs to improve appearance and durability
- Inspecting roof structure and identifying hidden issues
- Minor leak detection and preventative repairs
- Full roof replacements



Our inspections help detect current or potential roof leaks early while ensuring your roof remains compliant with Australian Standards.

Call today to book in your Roof Report

(07) 3555 6711 agradepg.com.au



OUR DRAIN UPGRADE PROCESS

- **INITIAL ASSESSMENT:** WE INSPECT YOUR EXISTING SYSTEM WITH ADVANCED CCTV TO IDENTIFY WEAKNESSES AND ASSESS CAPACITY.
- **CUSTOMISED PLAN:** WE RECOMMEND TAILORED SOLUTIONS SUCH AS LARGER PIPES, UPGRADED MATERIALS, OR ADDITIONAL DRAINAGE POINTS.
- **INSTALLATION:** UPGRADES ARE COMPLETED USING QUALITY MATERIALS AND MODERN TECHNIQUES WITH MINIMAL DISRUPTION.
- **TESTING & HANDOVER:** THE SYSTEM IS FULLY TESTED TO ENSURE RELIABLE PERFORMANCE.

CALL BROWN ARM BOYS DRAINAGE TODAY FOR AN EXPERT ASSESSMENT AND FIXED-PRICE SOLUTION.

FREE STORMWATER DRAIN ASSESSMENTS

&

10% OFF SEWER UPGRADES

Call today to book an
assessment!

(07) 3555 6708 brownarmboys.com.au

HOLD THE LINE: PELICAN AND SEABIRD VOLUNTEERS TO THE RESCUE

BY ADELIA BERRIDGE

The plea went out in 2021: If anglers could put their thinking caps on and become more responsible with their active and derelict fishing lines, there would be less need for these rescues, but nothing has changed. It's only got worse.

The RSPCA has often called upon the help of the Thorneside-based Pelican and Seabird Rescue (PSBR), noting their gratitude for the release of two Darter Birds in 2021, who were caught up in old fishing nets.

There's little worse for a Darter Bird than getting their beak caught up in netting, and it's an all-too-common occurrence for our seabirds. A trapped beak means a far more vulnerable position to be in, and of course, no access to food. Sadly, many seabirds who become entangled like this will die from starvation if they don't receive human intervention.

Thankfully, with the help of Hammy, from Pelican and Seabird Rescue, the RSPCA was able to capture two tangled Darter Birds, free them of their netting and even release one of the two straight away.

The second was taken into PSBR's care at Thorneside before being fit for release. While these rescues were not recent, it's an almost daily occurrence: calls to rescue birds, often entangled in fishing lines, or call-outs for hooks in beaks or stomachs with lines attached.

The late Hammy founded PSBR after witnessing a pelican trapped in a fishing line during a camping trip in Moreton Bay. She and her friend Sally eventually rescued the bird, inspiring them to educate others about responsible fishing. That camping trip changed both their lives.

PSBR now handles a growing number of rescues, caring for sick and injured birds around the clock with limited resources and fundraising. Volunteers are needed for tasks ranging from animal care to managing paperwork and social media.

RSPCA Queensland and Wildcare Australia provide vital support. You can report any sick or injured animals to the 24/7 RSPCA emergency line at 1300 ANIMAL (1300 264 625).



Photo: Supplied.

TOM OLIVER PRODUCTIONS PRESENTS

HIGHWAY TO HELL

THE ROCK 'N' ROLL CIRCUS

STARRING WES CARR & MAHALIA BARNES

FEATURING AUSSIE ROCK ANTHEMS FROM
AC/DC · GOLD CHISEL · MIDNIGHT OIL
DIVINYLS · STEVIE WRIGHT & MORE!

JUNE 25 – 28 AT THE AUGATHELLA SPIEGELTENT

612
BRISBANE
 BARTONS

WYNNUM FRINGE
WYNNUMFRINGE.COM

TOM OLIVER PRODUCTIONS PRESENTS

BRADLEY McCAW

THE MUSIC OF:

BILLY JOEL

AT THE AUGATHELLA SPIEGELTENT

JUNE 27 PART 1

HITS FROM 1971 – 78

JUNE 28 PART 2

HITS FROM 1979 – 93



What's On

If you're looking for something to do locally, check out The Community Leader's What's On page here and online.

SCAN TO LEARN MORE ABOUT **WHAT'S ON**



6 JUN

THE AUSTRALIAN EAGLES SHOW

Saturday June 6, 11:00am, Little Ship Club, Dunwich

Set against a stunning waterfront backdrop at the Little Ship Club, The Australian Eagles Show brings the legendary sound of the Eagles to life in an unforgettable live performance. Audiences will enjoy two powerful sets, including the complete Hotel California album and a second set of classic hits such as Desperado and Life in the Fast Lane. Known for their pitch-perfect harmonies and authentic musicianship, the band delivers a nostalgic journey through one of rock's most iconic catalogues, complete with food, drinks, and a relaxed coastal atmosphere. For tickets and information about how to get there, visit <https://littleshipclub.com.au/whats-on/social-calendar/>



9 JUN

RANGER STACEY'S JOEY CLUB

Tuesday June 9, 9:00am to 10:00am, Redlands IndigiScapes Centre, Runnymede Road, Capalaba

Ranger Stacey invites young nature lovers to a lively morning of wildlife discovery. Children will bellow like koalas, flap like birds and hop like kangaroos before enjoying story time and a sensory bushwalk to uncover natural wonders along the trail. Designed for children aged 0 to six, this interactive experience encourages curiosity and care for the environment. All children must be accompanied by an adult, and tickets are required for both adults and kids. Participants are reminded to wear sun-safe clothing, bring a hat, and carry a water bottle. For tickets, scan the QR code.



13 JUN

MELBOURNE INTERNATIONAL COMEDY FESTIVAL ROADSHOW

Saturday June 13, 8:00pm, RPAC, Middle Street, Cleveland

The Melbourne International Comedy Festival Roadshow returns to Redlands with a powerhouse lineup and the kind of infectious energy only Australia's biggest comedy festival can deliver. For nearly three decades, the Roadshow has toured the country, and this year it brings a fresh mix of comedy favourites and rising stars to the RPAC stage. Audiences can expect sharp wit, big personalities and a fast-paced night of laughs, all guided by award-winning host Jake Howie, whose global comedy chops set the tone for an unforgettable evening. With performers including Brett Blake, Kushi Venkatesh, Sez, and Suren Jayemanne, the show promises a blend of styles and stories that keeps the laughter rolling from start to finish. For tickets, visit rpac.com.au.



20 JUN

REDLANDS COAST COLLECTIVE MARKETS — PRELOVED MARKET

Saturday June 20, 9:00am to 1:00pm, Long Street, Cleveland

Treasure hunters and bargain lovers can explore the Preloved Market by Redlands Coast Collective Markets. This relaxed event invites visitors to browse a curated mix of quality pre-loved fashion, accessories, homewares and vintage finds while supporting sustainable shopping. With everything from clothing and jewellery to books, toys and quirky bric-a-brac, there are plenty of hidden gems to uncover. Entry and parking are free, making it an easy, feel-good day.



27 JUN

TWILIGHT MAKERS MARKET

Saturday June 27, 4:00pm to 8:00pm, Raby Bay Harbour Park

Set against the picturesque waterfront of Raby Bay Harbour Park, the Twilight Makers Market returns this June for a relaxed evening of creativity, community and coastal charm. Held from 4pm to 8pm, this popular monthly event brings together more than 60 talented local artisans showcasing handmade goods, alongside a tempting lineup of food trucks and live music. With its vibrant yet laid-back vibe, it's the perfect way to spend a winter evening by the bay.



CLEVELAND MARKETS

Sundays, 7:00am to 1:00pm, Bloomfield Street, Cleveland

A Redlands institution, the Cleveland Markets deliver a classic Sunday morning experience with fresh produce, bargain buys and hidden treasures. Wander through rows of stalls, chat with local vendors and pick up everything from plants to handmade goods. Add a coffee and something tasty, and you've got the perfect start to the day. Visit www.clevelandmarkets.com.au for more information.

THE MUSIC OF ELTON JOHN: YOUR SONG – FOR EVERYONE

BY JAN NARY

The Little Red Company – which has an impact much more powerful than its name implies – began in 2012 as a happy accident. Long-time friends Naomi Price and Adam Brunes just wanted to write a show together about Adele, called *Rumour Has It*. They wrote it, people booked it, the company was formed to tour the show, and it's been going ever since – over four million people have now seen their shows. Naomi says that the audience is central to their decisions in choosing a show's theme.

“We wanted to base a show on the music of Elton John, but didn't have a ‘jumping off point’ for it, so we asked the artists involved in the development if any of them had a personal connection to his songs. One of the artists said, ‘My brother's called Daniel because of the Elton John song’, and he told me the amazing story of his brother. There was the connection we needed – we started asking other friends about connections to Elton John's tunes, and every single story you hear in the show is true, gifted to us by someone who shared their experience.”

“With a show like this, that is so much about the audience, we wanted to make sure that the audience could see themselves reflected on stage – we wanted gender representation, cultural representation and queer representation,” says Naomi.

“When you're tackling lots of stories from different lived experiences, it's really important to have diverse bodies and voices on stage that can share those stories authentically. We're very lucky to have a cast of singers who are superstars in their own right, from Irena the soprano with the voice of an angel, all the way down to the rich, lush lower tones of John O'Hara's voice and Jason Arrow's *Guess That's Why They Call It the Blues*. When Jason played the lead role in *Hamilton*, he didn't get to show what an amazing singer he is.”

Redland audiences will have the special delight of hearing the stories and voices of the Redland City Choir joining the cast to add a unique local flavour to the show.

“Involving local choirs means that the show is different everywhere we play,” says Naomi. “It's such a beautiful show, and audiences will leave feeling uplifted!”



Photos: Supplied.



RECYCLING ADDICTION

NEW AND USED BUILDING SUPPLIES

- Windows
- Pipes
- Concrete Sleepers
- Doors
- Steel
- Mesh Sheets
- Screens
- Builders hardware
- Quirky and old items

MY BUSINESS CATERS TO TRADIES, DIY-ERS & COLLECTORS WITH OUR WIDE RANGE OF STOCK, VARYING DAILY

Darren: 0427 444 605 Mon - Fri: 7.30 am - 4.30ish
 119 Giles Road, Redland Bay Sat: 8.00 am - 12 noon | Sun: CLOSED

Water and wastewater in Redland City



Acting Mayor's message

Water is our most precious shared resource.

Every day in Redland City, clean and reliable water and efficient wastewater systems support our health, our economy, our environment and our way of life. Water and wastewater quietly underpin everything our community depends on.

Behind this essential service are extensive water and wastewater networks – pipes, pumps, treatment plants, dams and reservoirs – that work around the clock.

Much of this infrastructure is underground and out of sight, but it cannot be out of mind. These critical assets require regular maintenance, careful management and long-term investment to continue providing safe, resilient and affordable services.

Our water network does not exist in isolation. Council works closely with partner Seqwater and colleagues across

other local government areas to help ensure our region's drinking water supply remains safe, secure and resilient.

Our growing city makes investing in water and wastewater more important now than ever. Critical planned infrastructure upgrades and renewals help prevent failures, reduce environmental impacts, and ensure our systems can meet future demands. Every dollar invested today protects public health, supports local jobs, and avoids far greater costs tomorrow.

By valuing water and investing wisely in its management, Council is helping safeguard this essential service now and into the future.

Everyone has a role to play, from using water efficiently at home to fixing leaks and making everyday choices that reduce waste. Together, we can protect this vital resource and keep delivering what matters most to Redlands Coast.



Cr Julie Talty
Acting Mayor of Redland City
Email: mayor@redland.qld.gov.au

Ice Pigging technology to improve water quality

Council has wrapped up a successful water main cleaning trial using Ice Pigging technology.

This gentle cleaning process - which supports routine flushing programs as one element of maintaining compliant drinking water quality - sees a semi-solid ice slurry injected into live water mains.

The slurry moves smoothly through changing pipe sizes, around valves, to remove built-up sediment and biofilm.

The overnight trial in Wellington Point cleaned more than 2.4 kms of water main along Main Road.

This part of the network was chosen because it sits at the far end of the water supply system.



Photo courtesy of SUEZ.

Water quality testing before and after the clean showed clear improvements, supporting Ice Pigging technology as a low-risk, cost-effective maintenance option.



Work with City Water

A career change with impact



Top tips to turn the tide on your water bill

- Turn off taps while brushing your teeth
- Challenge the family to 4-minute showers
- Only run your dishwasher when full, and use the economy cycle
- Fix leaking taps immediately (a drip can waste 20,000 L/year – that’s around \$200 that can stay in your piggy bank!)
- Water your garden early in the morning or in the evening to minimise evaporation.



A connected water future

Our water network is part of the SEQ Water Grid.

Managed by Seqwater, the grid connects infrastructure from the Gold Coast, Logan, the Scenic Rim, Brisbane and the Sunshine Coast so that water can be collected and moved across the regions when it’s needed most.

In emergencies – like drought, contamination or natural disasters – the interconnected dams, water treatment plants and pipelines allow water to be quickly redirected.

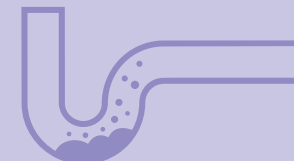
It’s reassuring to know Council is working with partners across SEQ to secure reliable water supply for our community now and into the future.



Quick quiz

Which of these is our biggest clogging culprit?

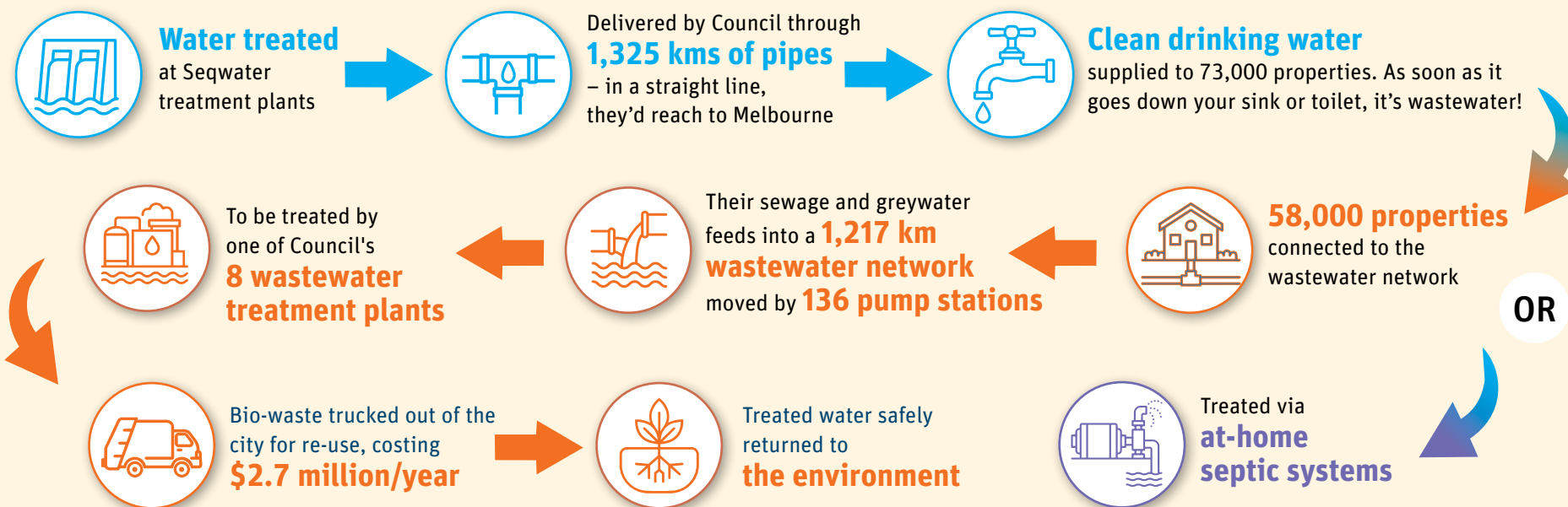
- A) ‘Flushable’ wipes
- B) ‘Flushable’ kitty litter
- C) Sanitary products
- D) Nappies
- E) Fats, oils and greases
- F) All of the above



QUICK QUIZ ANSWER: All of the above! Disposing of anything that isn’t one of the 3Ps – pee, poo or (toilet) paper – costs Council around \$500,000/year. **Top tip!** Place a bin next to your toilet.

Our water and wastewater cycle

■ Water
■ Wastewater



Co-regulated by Water Supply Regulation within the Department of Local Government, Water and Volunteers, Queensland Health, and Environmental Regulation within the Department of Environment, Tourism, Science and Innovation.

Big network, big numbers

\$896 million in assets

\$26 of every \$100 of rates

14.3 billion litres of water delivered

12.7 billion litres of wastewater treated

redland.qld.gov.au 3829 8999

Postal Address:
Redland City Council, PO Box 21, Cleveland QLD 4163



Maggie's Mates

SPONSORED BY MARKET 2 MARKET



Photo: Supplied.

What's your name? Hey there, my name is Coco. I am a ragdoll cat.

Where do you live? I live in Capalaba with my human family.

What's your favourite local walk? I prefer not to walk, but if I have to answer this question, my favourite walk is from my human's warm lap to the kitchen for food at breakfast and dinner time.

What's your most treasured toy? I'm more of an observer when it comes to play. I like to watch my cat brother bounce all over the place, but I am more reserved. They say I am an 'old soul'.

What's your favourite food? I'm pretty picky when it comes to food, but I love a good chicken wing. They are supposed to be good for my teeth.

What's your worst habit? I don't have any that I know of. My people would probably say I get a bit grumpy when I'm on a lap and they have to get up to do something.

Where's your favourite hangout spot? See above. I'm the ultimate lap cat.

Who's your best friend? Probably my brother, Oscar.

Do you have any embarrassing stories to share with us? One night, I was sitting on my human when they were eating peanut butter on toast. Some peanut butter must have spilled on me, because the dog spent the rest of the night licking my back!

What do people love most about you? I am a cuddle-bug. If you're warm, you are my friend!

Coco's favourite charity is Helping Paw SMBI, and we have made a \$50 donation on her behalf.



Would you like your best mate to be featured in Maggie's Mates? Email us at sales@market2market.com.au and we'll send you a questionnaire. We will donate \$50 to a registered animal charity of your choice for each profile published in The Community Leader.

Fringe Feed One4Review UK Weekend Notes Mumble Theatre Voice Mag UK World Magic Review
 Entertainment Now The Adventurer The Wag Review So Do Eat Review What's On Sydney Broadway Baby
 A Young-ish Perspective Gig Gossip Paul Showbiz Scottish Field Lisa in the Theatre Fandoo

ADULTS ONLY

MAGIC SHOW

18+

AUGATHELLA SPIEGELTENT
STARTS JUNE 25
WWW.WYNNUMFRINGE.COM

WYNNUM FRINGE
SCAN TO BOOK

MISS MAGGIE OF MANLY



CHEWING BEHAVIOUR IN DOGS

BY DR NICKY THOMAS, WYNNUM MANLY VETERINARY HOSPITAL

Destructive chewing is a very common problem in both puppies and adult dogs.

Why do dogs chew?

Chewing is a normal exploratory behaviour in puppies as they learn about the world around them. Teething, play, and attempts to escape confinement are other reasons puppies may chew excessively.



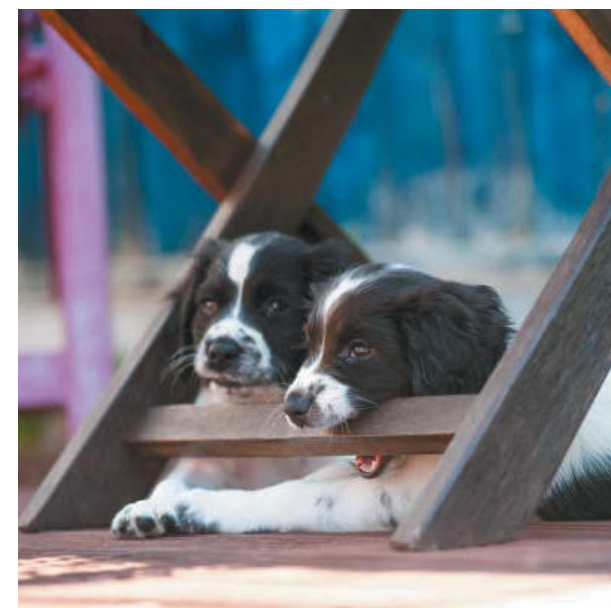
Adult dogs may chew more due to behavioural issues such as separation anxiety and a lack of environmental stimulation and exercise.

How can I stop my dog from chewing everything?

1. Keep your dog busy – exercise, reward-based training activities and the use of slow feeders/puzzle toys or treat balls can provide enrichment and prevent your dog from becoming bored.
2. Dog-proof your house – keep clothes, toys and small objects out of reach; keep cupboards, drawers and toy boxes closed.

3. Supervise your dog when inside or put them in a secure area, such as a crate, when you are not home.
4. Work on training from puppyhood – use the “trade for a treat” method. If your dog picks up an item they are not supposed to, offer a high-value treat in exchange and give positive praise.
5. Provide appropriate chew toys – dogs of different ages and breeds require toys of varying degrees of strength to avoid unwanted destruction – have a chat with your vet about choosing the right chew for your pet.
6. Do not give old shoes, clothes or toys to chew – dogs are unable to distinguish between these and “good” (i.e. forbidden) items.

With a consistent approach from the early days of puppyhood, you can help reduce inappropriate chewing in your dog. If your dog is showing other signs of anxiety and destruction, it may be beneficial to book an appointment with your vet to discuss more involved behavioural interventions.



NEW SEASON ARRIVALS IN STORE & ONLINE NOW AT

LABELS

by the bay

Visit us in store or online now to view our range of New Season Arrivals. Full of trans-seasonal items made in natural & breathable fibres.

Labels by the Bay is situated in two great Bayside locations, Cleveland and Manly.

CLEVELAND 6/48 BLOOMFIELD STREET | MANLY SHOP 2 STRATTON SQUARE 188 STRATTON TERRACE | OPEN 7 DAYS | WWW.LABELSBYTHEBAY.COM.AU

LET'S WORK TOGETHER TO REDUCE WASTE – AND COSTS

FROM REDLAND CITY COUNCIL

When you put your wheelie bin out each week, it's easy to think of waste as a simple, routine service – collected, taken away and out of sight. But behind that weekly collection is a complex and increasingly costly system that supports both the collection and disposal of waste as well as an entire network of services across the community.

THE TRUE COST OF YOUR RED-LID WHEELIE BIN

Once your bin is emptied, the contents are transported to a landfill for disposal. Because Council does not operate its own landfill, this means waste must be taken well beyond Redlands Coast. As landfill capacity across south-east Queensland becomes more limited and more expensive to manage, these rising transport and disposal costs continue to grow. The flow-on effect is reflected in the waste utility charge, making waste one of the fastest growing costs for all local councils – including Redland.

Kerbside red-lid (general waste) and mixed waste taken to Council's Recycling and Waste Centres is now becoming the most expensive way households dispose of their waste. Why?

- It contains mixed, unrecyclable material, which isn't sorted – it's compacted and continually covered with more and more waste.
- Kerbside waste bins contain approximately 65 per cent of recyclable and compostable material, such as green waste, which shouldn't be there.

- Landfilling attracts high disposal and waste levy costs, which are set to increase year on year.

In contrast, recycling and green waste are now cheaper to process because materials can be recovered and reused, and recycling avoids a range of other costs.

WHAT ELSE YOUR WASTE UTILITY CHARGE HELPS TO COVER:

- The collection and processing of more than 60,000 tonnes of recyclable material and green waste.
- Assisting 500,000 visitors to eight recycling and waste centres operating 363 days a year, 9.5 hours a day: including staff, equipment, maintenance, processing of 16 different waste streams, and environmental management.
- Around 68,000 public place bin collections.
- Supporting householders, including service changes, bin repair and maintenance, and enquiries resulting in more than 16,000 customer requests annually.
- Community education and clean-up programs to reduce litter and improve recycling habits.
- Community support services, such as manual collections and bulky waste collections for eligible residents.
- Waste reduction and sustainability initiatives.
- Behind-the-scenes administration to plan, manage, and deliver essential waste services.

WORKING TOGETHER:

Council provides education on what goes in each bin, how to reduce waste and offers options to change bin sizes or services so households can get the best value. But the system works best when everyone plays their part by reducing waste and sorting waste both at the kerbside and at Recycling and Waste Centres.

Ultimately, your waste charge supports the full journey of waste, from your kerb to its final destination, along with many other services that help keep the community clean along the way.

To find out more, visit Redland.qld.gov.au/waste or search 'Council's waste strategy'.

A SNAPSHOT:

- Waste is one of the fastest-growing costs for local councils.
- Landfill space is becoming more limited, which means the waste needs to be taken outside the city, contributing to rising landfill costs along with rising waste levy charges.
- The red-lid and mixed waste bin is rapidly becoming your most expensive choice.
- Waste charges cover a broad range of services – much more than just your weekly bin collection.
- You can help by reducing waste in your day-to-day activities and sorting waste into the right bins.

LET'S RETHINK OUR WASTE

Let's work together to reduce waste going to landfill:

- Read the top 10 reasons why we need to reduce waste
- Find out 6 easy ways you can reduce waste by up to 60%.

Scan the QR code for more information.

🔍 redland waste strategy

☎ 3829 8999 📱

03/15 05/25

A GROUP OF MEN WALKING, TALKING – AND MAKING SENSE OF IT ALL

BY JAN NARY

“Our world’s becoming dominated by communication over phones and digital messages, and some people’s lifestyles can isolate them from the community, so it’s nice to have person-to-person contact, especially if you’re going through a rough patch.”

Shon Bailey is from the Men’s Walk and Talk Redlands, which has a regular turn up of about 20 men every Sunday getting together to – well, to walk and talk.

“Sometimes just having someone to chat to in a non-judgemental environment is pretty good,” he says.

“You might be new to the area, not know anyone and not sure how to make contacts, you might be going through a breakup or loss of someone special, you could be in a bad headspace and need to have a bit of a chat with other guys to realise that you’re not alone, you have a community. It means that partners and families aren’t the only ones to unburden on.”

Shon says that some first-timers aren’t sure what to expect: “Is it just going to be a bunch of guys having a whinge?” But it’s a no-pressure, no-formalities group, just a healthy Sunday walk that offers the men an outlet to share thoughts and feelings and what’s going on for them.

“It can range from needing an outlet to just wanting to have a yarn about the footy,” he says. “It’s a good cross-generational environment for those who don’t get to mix much out of their own age range. We have retirees and young dads with bubs in prams. For young guys, it can offer the chance to mix with good role models and be reminded that you can be masculine and still be a good bloke.”

The role of families is always respected. There are family barbecues, and about two-thirds of the men come



Photo: Supplied.

on the recommendations of their wives or girlfriends. The group supports charities, especially those focused on domestic violence.

For those who can’t get away on Sunday morning, the group will be trying out an after-work walk, maybe followed by a meal.

For more information, check the Men’s Walk and Talk Redlands Facebook page, or just turn up outside the Mt Cotton IGA at 7:30am on Sunday mornings.

WINTER COMFORT
SALE ON NOW

20% OFF



Limited Offer

Nordic 60 Large
Chair and Ottoman

\$1999

+ FREE
Small Side Table
valued at \$189



Entire range *conditions apply

DESIGNED IN NORWAY



MADE IN NORWAY



Stressless®

20-25%
OFF

STRESSLESS
RECLINERS &
SOFAS

recliner & co

Fortitude Valley, Shop 2 / 27 Doggett St
(Opposite Space Furniture) | T. (07) 3854 1688

Upper Mount Gravatt, 50 Freda Street
T. (07) 3191 6788
reclinerco.com.au

*T&Cs apply. See in-store for details.

BAYSIDE RESIDENT HOLDS TITLE OF OLDEST FIRST-TIME GRANDFATHER

When Charles Smith held his newborn granddaughter for the first time, he knew the moment was extraordinary, though he had no idea it was also historic – and record breaking. On 29 August 2025, his son, Ashley, and daughter-in-law, Hanna, welcomed their daughter, Isla. That day, Charles became the world’s oldest first-time grandfather at 91 years and 209 days old.

Charles was unaware of the record until Ashley and Hanna handed him a Guinness World Records certificate. They had applied in secret, wanting to surprise him. Before retiring, Charles spent years promoting motor sports, including the Grand Prix. He became a father later in life, welcoming Ashley at 55, and now he proudly goes by “Poppy”. As he put it, “There are plenty of grandpas around. Poppy suits me.”

Thinking back to the moment he first met Isla, he laughed. “I picked her up and didn’t want to give her back – except for the nappy changes,” Charles told Guinness. He’s convinced they bonded instantly. “She looks at me in my Poppy hat and laughs. I look at my family – Ashley, Hanna, and Isla – and I know this is it. Family.” Even with the attention around his record, Charles stays grounded. “She’s my granddaughter. Record-breaking or not, she’s my family.”

Ashley says his dad’s independence is what stands out most. Charles spends his retirement travelling around Australia in his camper van and taking his boat out on Moreton Bay. According to Ashley, age hasn’t slowed him down and he is now more active than ever. Perhaps the new arrival has put an extra spring in his step?

Hanna told Guinness that she remembers being told Charles was “a little older” before she met him, but she never noticed. “He had such a spring in his step. I feel incredibly lucky to have him as my father-in-law. And it makes us laugh – if Isla had arrived any earlier, he might not have qualified for the record.”



Charles with Ashley and granddaughter Isla. Photo: Supplied.



Empowered learners ready for the future. Enrolments for 2027 now open.

Capalaba State College offers a seamless Prep–Year 12 learning journey with strong community, stability, and support.

- Every student matters and is supported to reach their full potential.
- Students are encouraged to take pride in their learning and achievements.
- Learning extends beyond the classroom through academic, sporting, and cultural opportunities.
- Students build confidence, character, and skills for future study, work, and life.
- A supportive community, high expectations, and strong relationships help every learner thrive.

We invite you to explore the opportunities at Capalaba State College and join our community.



www.capalabasc.eq.edu.au | 3823 9111

THE MIGRATORY SHOREBIRDS WE SEE EACH YEAR ON THE BAYSIDE

BY UNA SANDEMAN

For thousands of years, the coastline stretching from Wynnum to Manly and across the Redlands has been one of the most important feeding grounds for migratory shorebirds in Australia. Each year, these remarkable birds arrive on our shores after travelling thousands of kilometres from breeding grounds in the northern hemisphere, escaping the Arctic winter to spend the southern summer feeding and resting around the rich tidal flats of Moreton Bay.

For the last eight months, these birds have been quietly preparing for one of the greatest migrations on Earth. Day after day, they feed across the mudflats, mangroves and sandbanks of our bayside coastline, building the critical body fat reserves needed for their long flight north. Since March, most of them have left our shores and taken the extraordinary journey back to countries such as the Arctic and Subarctic Russia, Alaska, China, and Mongolia, where they will breed during the short Arctic summer.

The bayside coastline is far more than just a resting place. It is a vital refuelling station along the East Asian-Australasian Flyway, one of the world's great migratory bird routes. Without healthy feeding grounds here, many of these birds simply would not survive the return journey.

What makes this coastline so important is the rich mud found across the intertidal areas of Moreton Bay. While mud may not look particularly appealing to us, for migratory shorebirds, it is a banquet table filled with life. Beneath the surface are prawns, tiny fish, worms, molluscs, shellfish and countless microscopic organisms packed with nutrients and energy. Every low tide becomes a feeding frenzy as birds probe the soft mud with specially adapted bills, searching for food to fuel their migration.

Species such as the Bar-tailed Godwit, Eastern Curlew, Grey-tailed Tattler and Great Knot rely heavily on these feeding grounds. Some, like the Bar-tailed Godwit, are capable of flying more than 11,000 kilometres nonstop – one of the longest known migrations of any bird on the planet. To achieve this incredible feat, they must almost double their body weight before departure.

Many local residents may not even realise these birds are here, quietly feeding along the shoreline while people walk dogs, fish, kayak or enjoy the waterfront. Yet these birds are internationally significant. The shores of Moreton Bay support tens of thousands of migratory shorebirds every year and are recognised as wetlands of global importance.

Sadly, these birds face growing threats. Habitat loss through coastal development, disturbance from people and dogs, pollution and climate change are all placing enormous pressure on migratory shorebird populations. Some species visiting our bayside coastline are now listed as critically endangered, with numbers declining dramatically across the flyway.

That is why protecting the Wynnum, Manly and Redlands coastline is so important. Healthy tidal flats, mangroves and coastal wetlands are essential not only for shorebirds but for the overall health of Moreton Bay itself. These habitats support fish nurseries, improve water quality and provide resilience against storms and erosion.

There is also something deeply inspiring about knowing that these birds (some of which can fit in the palm of your hand) connect our local coastline to the farthest reaches of the planet. A bird feeding quietly at Wellington Point in April may now be flying over oceans and continents on its way to the Arctic tundra. Their survival depends on every stop along that journey remaining healthy and protected.

With the southern-to-northern migration season over once again, the shores of our bayside suburbs are part of a truly global story. The mudflats of Wynnum, Manly and the Redlands are not wastelands waiting to be developed – they are life-support systems for some of the world's most extraordinary travellers. Protecting them means ensuring future generations will continue to witness the wonder of migratory shorebirds returning to our shores year after year.

Migratory shorebirds are not only vital to healthy ecosystems, but they also bring enormous potential economic value through eco-tourism. Around the world, birdwatchers and nature lovers travel great distances



Eastern Curlews, Bar-tailed Godwits. Photos by Una Sandeman.

– often spending significant amounts on accommodation, dining, tours, and local businesses – simply to witness spectacular wildlife events such as shorebird migrations. The presence of internationally significant migratory birds along the Wynnum, Manly and Redlands coastline creates a unique opportunity for sustainable eco-tourism that celebrates nature while supporting the local economy. Protecting these habitats not only safeguards wildlife but also helps build a future in which people can experience the beauty and wonder of Moreton Bay's incredible birdlife.

If you would like to know more about these amazing migratory shorebirds and join activities such as monthly shorebird counts, check out the Queensland Wader Study Group website.



Tint-a-Car
Protects Best.

Darkest Legal Film with 99 % UV Protection

Ceramic Paint Protection
Interior Protection (Fabric/Vinyl/Leather)

Films Exclusive to Tint a Car
Nationwide Lifetime Warranties



Unit 1/18 Smith Street, Capalaba Qld 4157 | 3245 6822 | capalaba@tintacar.com.au

Joe's
Caravan
Sales



WANTED TO BUY

ALL Caravans and Motorhomes
WE COME TO YOU!

• Fast settlement • Finance Paid Out

If you want a quick, no hassle sale
call Joe for a price...

0418 876 395

bluexe@gmail.com

REAL ESTATE NEWS & VIEWS

PROPERTY OF THE MONTH



Hendlay found its Home

2/142 West Ave, Wynnnum



Michael O'Brien
0401 938 302
hendlayrealestate.com.au

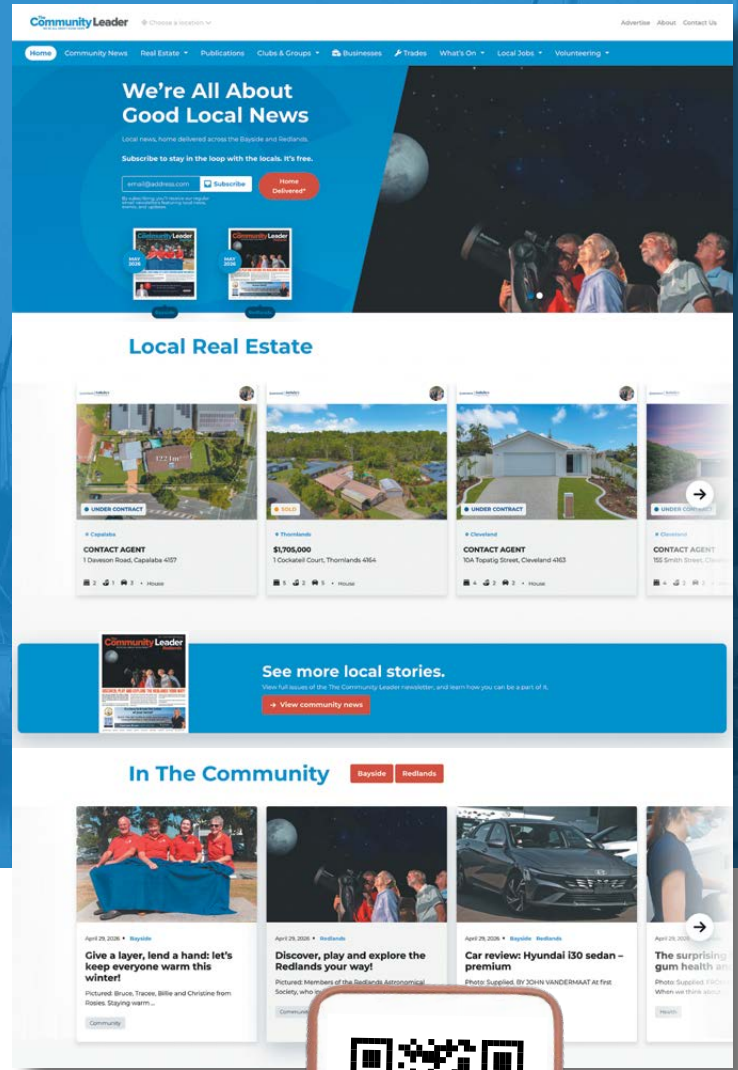




VISIT WWW.THECOMMUNITYLEADER.COM.AU

The Local Community Online

The **Community Leader** is not just another property portal, it's a trusted local hub where people find reliable community information, supported by one of Brisbane's largest print runs. Our website content is focused on the corridor from **Mt Cotton to Camp Hill**, ensuring locals can easily access news and updates relevant to their area.



Camp Hill to Mt Cotton



The Community Leader gives your property more than just exposure — it gives it local credibility.

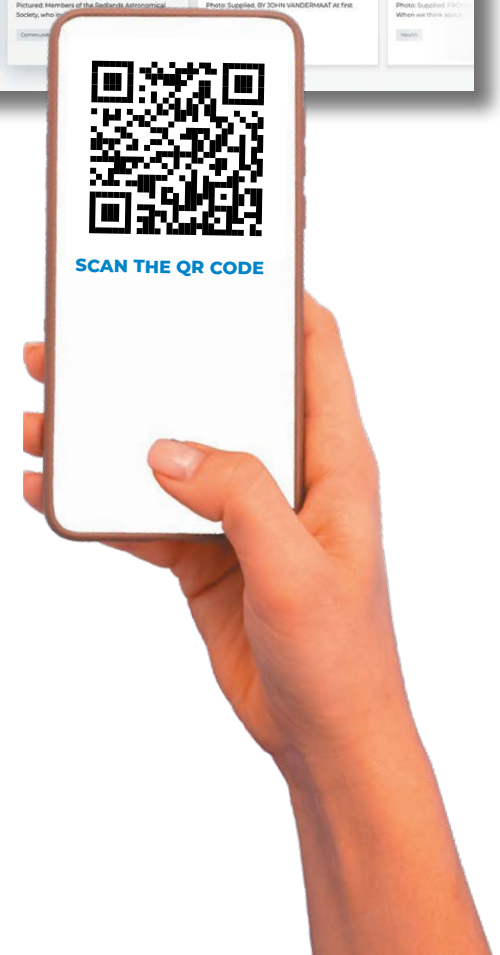
Unlike standard property portals, The Community Leader is a trusted neighbourhood hub where locals actively seek reliable community info, events, and updates. Your listing appears in a place people already know and trust.

With one of Brisbane's largest print runs and home delivery networks, plus a website dedicated to the corridor from Mt Cotton to Camp Hill, your property is showcased directly to the people most likely to buy in the area.

Strong local reach. High engagement. A platform built for the community your buyers belong to.

- LOCAL CLUBS
- LOCAL BUSINESSES
- LOCAL VOLUNTEERS

- LOCAL EVENTS
- LOCAL PROPERTIES
- LOCAL TRADIES

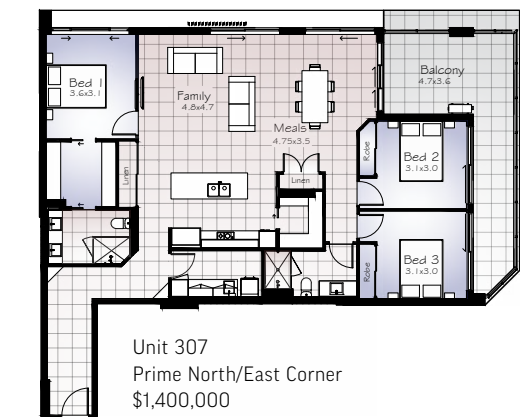




ParkView

AT MICHELLE COURT

Your New Cleveland Lifestyle Awaits



Imagine waking up to the tranquil sounds of nature, yet having all the conveniences of modern life right at your doorstep. AFT is thrilled to announce the launch of ParkView, a stunning new residential development at Michelle Court in the heart of Cleveland. This isn't just an apartment; it's a premium lifestyle crafted for sophisticated living and smart investing.

Discover Premium Apartment Living...

Parkview at 11-14 Michelle Court, Cleveland is an exclusive collection of 56 premium apartments, perfectly positioned to offer the best of Cleveland living. 35% sold so far and 100% owner occupiers! We've gone above and beyond to provide a life of comfort and convenience. When you own at ParkView, you gain access to AFT's signature, resort-style facilities, including:

- A sparkling swimming pool
- A fully-equipped gym and sauna
- Dedicated meeting room for your professional needs
- A spacious residents lounge/function room for entertaining
- A unique offering: on-site RV/Caravan parking
- Five star Foyer
- Residents workshop
- Secure entry
- Secure Mail/Parcel delivery room

Whether you're looking for a comfortable new home or a savvy addition to your investment portfolio, ParkView is an opportunity not to be missed.

Don't miss your chance to secure your future in this highly sought-after development. Construction has started, meaning this opportunity is moving fast.

- 2 Bedroom Residences start from a compelling \$935,000.
- 3 Bedroom Residences start from \$1,285,000.
- 2 Bedroom + Study Residences start from \$1,125,000.

Now is the perfect time to get in early and secure the best floor plan and view!

Visit Our Display Unit to see the AFT difference for yourself. You can view the quality and finish of our apartments and discuss your options with our friendly team. Our display unit is located just minutes away at our 'Enclave' development: 228 Middle Street, Cleveland.

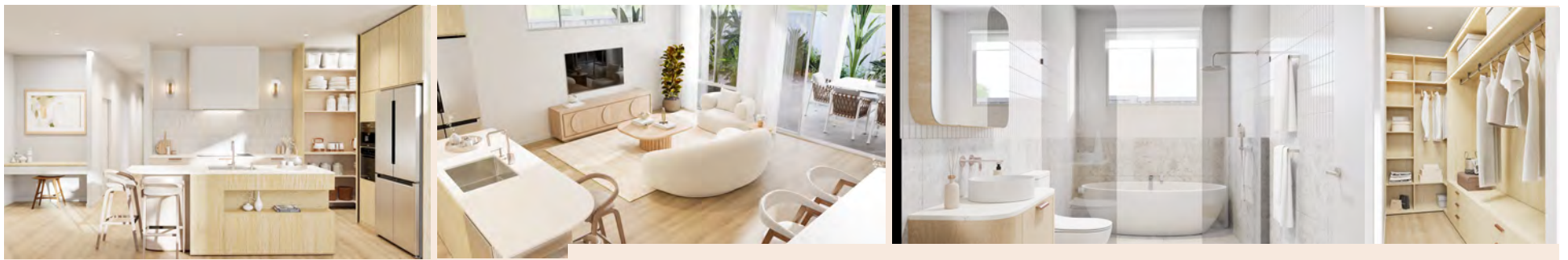
Plans, detailed pricing, and a wealth of information about ParkView are available for viewing now. The lifestyle you've been dreaming of is closer than you think.

Contact our sales specialists today – they're ready to answer your questions and help you secure your new home at ParkView.

Sharon Saul | 0403 384 904 | sharon@javica.com.au

Nyanda Galvin | 0400 936 236 | nyanda@javica.com.au

Your premium Cleveland lifestyle starts here!



CONSTRUCTION UNDERWAY - ONLY A FEW REMAINING IN STAGE 1

A limited release of 15 out of total 28 freestanding, freehold luxury villas, within a secure, gated, resort-style sanctuary.
With optional Caravan parking - Completion estimated end of 2026



1 Connie Way Thornlands

VIRTUAL DISPLAY at 39 Bay Terrace, Wynnum
OPEN - Monday - Saturday by Appointment
Contact Tomas 0416 099 361



www.thepalmsvillas.com.au

VIRTUAL DISPLAY at 39 Bay Terrace, Wynnum
OPEN - Monday - Saturday by Appointment
Contact Tomas 0416 099 361

www.panoramawynnum.com.au

EXPAND YOUR HORIZON

PANORAMA
WYNNUM



35 Bay Terrace Wynnum
Completion estimated mid 2027



SECURE YOUR APARTMENT NOW - CONSTRUCTION UNDERWAY

All two-bedroom residences are now **SOLD OUT**, leaving a limited selection within our three-bedroom Luxe range.

MONTHLY STATS FOR MARKET REPORT - May 2026							
SUBURB	FOR SALE	LAST MTH VARIANCE	SOLD	LAST MTH VARIANCE	% SOLD	AV. DAYS ON MARKET	MEDIAN SALE PRICE
VICTORIA POINT	100	29	17	-1	17.00	19	\$1,138,750
REDLAND BAY	150	41	21	-4	14.00	21	\$1,155,000
THORNLANDS	73	12	17	-1	23.29	15	\$1,195,000
MOUNT COTTON	11	-2	2	0	18.18	20	\$1,227,500
CLEVELAND	105	9	16	-6	15.24	23	\$1,352,500
ALEXANDRA HILLS	29	15	2	-3	6.90	11	\$1,092,500
CAPALABA	57	22	15	3	26.32	9	\$1,119,638
WELLINGTON POINT	45	1	7	-1	15.56	15	\$1,400,000
BIRKDALE	61	4	4	-1	6.56	15	\$1,222,500
THORNESIDE	3	1	1	-7	33.33	27	\$1,155,250
ORMISTON	43	5	8	-2	18.60	22	\$1,370,000
SHELDON	6	2	2	1	33.33	27	\$1,815,000
REDLAND CITY TOTAL	683	139	112	-22	16.40	19	\$1,208,750

REDLANDS MARKET WRAP - UP

The real estate shift we have mentioned in previous market reports is now showing up this month in the form of greater supply and decreased sales volume. However, the price and volume are two different numbers.

Property prices don't move on their own - they follow people's ability and confidence to buy. When those factors tighten, buyers become more cautious, and prices stabilise or soften. The economy and house prices are tightly linked because property sits at the intersection of income, borrowing capacity, and confidence.

Think of the economy as being powered by a few core forces:

- 1. Interest rates (cost of money)** - Higher rates = borrowing slows = spending cools.
- 2. Employment & wages** - Job uncertainty or stagnant wages = people pull back.
- 3. Inflation (cost of living)** - Erodes purchasing power = higher interest rates, which slows the economy.
- 4. Population growth & migration** - More/less people = more/less demand for housing, goods, and services.
- 5. Consumer confidence** - If people feel uncertain, they save and delay buying decisions.

The Most Influential Variable in Valuating a Home

The psychology of the buyer - that is one of the most underrated, but also one of the most influential, factors to consider when selling a home.

Have you ever wondered why two virtually identical homes can sell for completely different prices? They look the same, but their selling prices are on opposite ends of the scale? It's not because one home is objectively 'better', it's because it *felt* more valuable in the moment.

Buyers are human. They make decisions based on how they feel in the moment - and that is what sellers and agents need to lean into.

First impressions are crucial. Buyers tend to justify what they think a home is worth, based on how it makes them feel - and that feeling is usually established before they even step inside. That's why a well-presented exterior can make a home seem more valuable.

The same goes for the inside of the property. Once a buyer starts to visualise their life in a home, and begins to form an emotional attachment to it, logic takes a back seat. The process shifts from evaluating what the home is worth, to justifying why it's worth the price they now have in their head.

Psychology of the buyer is a factor that tends to be overlooked by sellers and agents. Yet it plays a big part in helping the seller obtain a higher price. If you lean into it and factor it into your selling process, it can be hugely beneficial.

Written by Dave Tidbold.



**THE
SMARTRE
SALE**

*The only ethical, effective
and risk-free way to sell
your property!*

**NO UPFRONT COSTS.
NO SALE. NO CHARGE.**



TIDBOLD
REAL ESTATE

Ethics in Real Estate

Call us 7 days/24 hours

3207 6000

WYNNUM FRINGE'S FAMILY-FRIENDLY SHOWS ARE OUT OF THIS WORLD!

Wynnum Fringe is excited to present three family-friendly live shows to entertain big and little kids during the July school holidays.

Get ready to go wild with **Party Animals** – the ultimate jungle jam for kids and their grown-ups!

Hosted by the larger-than-life DJ, Marty the Monkey, this one-hour spectacular takes you on a hip-shaking journey to try and find the biggest dance party in the jungle! Along the way, little (and big) party animals can dance, laugh, and let their imaginations run free with interactive games, handmade puppets, bubbles, streamers, balloons, and hilarious air-blowers that send toilet paper flying all over the dance floor!

Packed with chart-topping pop hits, retro dance favourites and non-stop energy, **Party Animals** is the perfect first theatre experience for younger children – no sitting still required! Jungle/animal-themed dress is encouraged!

CIRCUS The Show will take audiences on a journey of whimsy, wonder, and amazement with its reimagined family circus spectacular, which families across the globe are raving about!

CIRCUS is the latest trailblazer in children's entertainment, featuring world-class illusions, tumbling acrobats, highly skilled jugglers, breath-taking and elegant aerialists, an endearing clown with his gigantic 6ft balloon, and enough side-splitting comedy to send any grown man running for the toilet!

The Greatest Magic Show is celebrating its eighth year of touring since its sold-out debut in 2018. The production has grown into one of Australia's most successful family magic shows.

The production has earned widespread acclaim across major arts festivals, collecting top honours including *Best Children's Show* at Fringe World (2019), *Best Kids Show* at Sydney Fringe (2019), *Best Kids Show* at the Melbourne Magic Festival (2022) and *Best Children's Event* at Adelaide Fringe (2024).



Photo: Supplied.

Stars of the show, Sam and Justin, will be displaying a spectacular illusion crafted by the same renowned Las Vegas builders who have created magic for legends such as David Copperfield and Lance Burton – if only they can work their way through all the magical mayhem along the way!

Every child who attends the show will receive a free magic wand on entry and have their chance to take a photo with the stars of the show after the performance.

For tickets and a full program of shows, go to wynnumfringe.com.

50c fares made permanent



As well as delivering permanent 50c fares, here are some of the ways the new Queensland Government is delivering for the Redlands:

- Delivering a new multi-level car park at Weinam Creek
- Upgrading Alexandra Hills TAFE
- Delivering a new Redland Whitewater Centre for 2032 and beyond
- Duplicating Tingalpa Creek Bridge
- Delivering a transit lounge, MRI machine and ICU at Redland Hospital
- Delivering more anti-theft measures and CCTV in Capalaba and Cleveland
- Delivering more early intervention with Top Blokes
- Upgrading Cleveland-Redland Bay Road
- Upgrading Victoria Point and Redland Bay State Schools.

Find out what else we're delivering for you.

[Q | Delivering for Queensland](#)

**DELIVERING
FOR QUEENSLAND**



**Queensland
Government**

YOGA FESTIVAL RETURNS TO BURBANK FOR SECOND YEAR OF WELLNESS

BY ASHLEIGH HOWARTH

A celebration of mind, body and soul is set to return to Burbank on June 14, with the Yoga Festival Brisbane promising a full day of movement, mindfulness and community connection.

Now in its second year, the festival will be held from 9:00am to 4:00pm on June 14 at the Hare Krishna Temple, one week before the International Day of Yoga.

Following a successful debut last year, which drew more than 500 attendees from across Brisbane, the Redlands organiser Sneha Ghandi is excited to once again welcome yogis of all levels for a day of health and wellbeing.

“We certainly did not expect that many people last year, so we knew this was something we had to do again,” she said.

This year’s program will feature multiple spaces running simultaneously, offering a wide range of yoga styles, including vinyasa, chair yoga, gentle flow, power yoga, slow flow, and yoga for kids.

Alongside the movement classes, attendees can also take part in a variety of meditation and mindfulness sessions, including breathwork, EFT tapping, Japa mantra meditation, sound baths, kirtan (devotional music), and teachings from the Bhagavad Gita.

“We’ll also have more markets and stalls than last year, as well as henna and face painting,” Sneha said.

“Everyone will also receive a nourishing, wholesome lunch designed to support the body without feeling too heavy.

“We’ve also extended the day because last year people didn’t want to leave – they were having so much fun they just wanted to stay.”

As a certified yoga instructor, Sneha said the festival is about more than physical practice.

“People often forget the true meaning of yoga, which is the connection of the mind, body and soul,” she said.

“That’s why we are very authentic in everything we offer.

“People go to the gym and focus on the outside, but it’s just as important to look after what’s happening within.

“Yoga helps reduce stress, improve flexibility and bring mental clarity through movement, breath and meditation.”

A \$10 donation secures your entry to the festival, with all proceeds supporting future community events and wellness programs.



Photo: Supplied.

“Last year we were able to run four additional retreats – three of which were free for the community, and we’re hoping to do even more this year.”

For more information, log onto www.yogafestivalbrisbane.com or search Yoga Festival Brisbane on Facebook.

HARLAN GOODE BRINGS AUSTRALIAN IDOL MOMENTUM HOME

BY ASHLEIGH HOWARTH

Fresh from a standout run on this year’s *Australian Idol*, local singer Harlan Goode is already turning his focus to what comes next – and is inviting the community to be part of it.

With an upcoming performance at the Redland Performing Arts Centre, Harlan is bringing the energy, confidence and experience he gained on national television back to a hometown audience eager to see him live.

“Making music is definitely the focus moving forward after *Australian Idol*,” he said.

“I feel like I’ve developed a lot more drive in every aspect of my career. Not that I didn’t have it before, but being exposed to what a career as a successful artist could look like has made me even hungrier for it.

“In the near future, though, people should keep an eye on RPAC’s website and make sure they’re free on June 27.”

Coached by prominent Australian singer, songwriter, and backing vocalist Carmen Smith, Harlan wowed audiences week after week, ultimately finishing runner-up in the national competition, which saw thousands of people apply for their chance at stardom.

Reflecting on his time on the show, Harlan said the experience exceeded all expectations.

“If I’m being completely honest, I went in with absolutely no expectations, and because of that, it turned out to be one of the best experiences of my life,” he said.

“I made so many great friends throughout the journey that I still keep in touch with, and I just had so much fun the whole way through.

“My favourite moment would definitely have to be performing *Somebody to Love* by Queen – it’s such an iconic song with huge shoes to fill, and it’s incredibly challenging vocally because of all the tricky intervals.

“I felt like it really allowed me to showcase not just my vocals, but also who I am as a performer.

“Also, getting to perform *The Prayer* with Anthony Callea was just surreal.”

With his dreams now coming true from the experience, Harlan has some good advice for other young people who dream of taking to the stage as a career.

“I still consider myself an aspiring musician, but the biggest lesson I’ve learned is that nothing happens if you sit around waiting for something to,” he said.



Photo: Supplied.

“A lot of people (including my past self) wait for the ‘right time,’ but the truth is, there’s no such thing.

“Every second spent making excuses is a second you’re delaying your goals – you just have to start.”

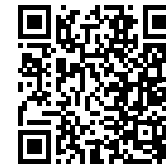
To book tickets, visit rpac.com.au.



Local Trades

If you're looking for local trades, check out The Community Leader's Trades page here and online.

SCAN TO LEARN MORE ABOUT **LOCAL TRADES**



AIR CONDITIONING

AIR CONDITIONING

- Split System Air Conditioning
- Ducted Air Conditioning
- Smart Home Wi-Fi Upgrades
- Repairs & Maintenance
- Spare Parts & Replacements
- Annual Servicing
- Warranty Work & Repairs
- Commercial HVAC Management
- Leak Detection & Regassing
- Relocation of Existing Units

JARIG QBCC: 15128877 - Elec: 80306 - ARC: AU39136
admin@jaricgroup.com.au

1300 452 742

COMPUTER & IT SERVICES

COMPUTER PROBLEMS?

- AVAILABLE 7 DAYS
- NO CALL OUT FEE (BAYSIDE)
- WE CAN COME TO YOU

TECHBUSTERS
REPAIRS, SERVICING, SALES & SUPPORT
216 Vienna Rd, Alex Hills (By Appointment)

VISA MasterCard e mytaxi **3824 6117**

ELECTRICAL

LOCAL ELECTRICIAN

- Safety Switches
- Phone & Data Points
- Switchboard Upgrades
- Electrical Inspections
- Ceiling Fan Upgrades & New Installs
- EV Charge Points
- Warehouse & Factory Lighting
- Security Lighting
- Pool & Spa Circuits
- Smoke Alarms & Compliancy

JARIG QBCC: 15128877 - Elec: 80306 - ARC: AU39136
admin@jaricgroup.com.au

1300 452 742

KITCHEN

Evenden Cabinets

Kitchens - Bathrooms
Wardrobes - Offices
All Your Cabinetry Needs

0412 736 885
evendencabinets@gmail.com
www.evendencabinets.com.au

ANTENNA INSTALLATIONS

DIGITAL ANTENNA INSTALLATIONS

FOR \$49 EXCL. PARTS
Free Quotes • TV Tuning • Extra TV points
PH: 0416 322 600

CONCRETE

BAYSIDE CONCRETING

QUALITY WORK AT THE RIGHT PRICE

PLAIN • EXPOSED • COLOURED • COVERCRETE • RE-SURFACING • RE-SEALING

NO JOB TOO SMALL **DARREN** 0413 502 821 **PROMPT SERVICE**
JOSH 0438 574 353
QBCC 1109507

BOOK A TRADES AND SERVICES ADVERTISEMENT TODAY

From \$175 PLUS GST

Phone DAMIEN on 0421 786 302 or email sales@market2market.com.au

MOVERS

BRISBANE REMOVALS QLD FURNITURE REMOVALISTS

Servicing all the Bayside area plus long distance. Specialising in the following:

- Household Removals
- Piano's
- Pool Tables
- Offices and School Removals
- Prepacks plus supply cartons, paper and tape

OVER 35 YEARS EXPERIENCE
Call Mal on 0427194845 to make your booking.

BUILDING & MAINTENANCE

AE PRICE PTY. LTD. BUILDERS

KITCHENS • BATHROOMS • REMODELLING SPECIALIST

Call Stiven: 0430 355 112 | info@mrfixall.com.au
www.mrfixall.com.au

BUILDING • MAINTENANCE • PAINTING
Reputation and trust Est. 31 Years
Member of the Redlands Coast Chamber of Commerce
Insured - Police Clearance QBCC 1314383

BOOK A TRADES AND SERVICES ADVERTISEMENT TODAY

From \$175 PLUS GST

Phone DAMIEN on 0421 786 302 or email sales@market2market.com.au

FENCING/RETAINING WALLS

BOSS RETAINING WALLS

Timber and Concrete 1 metre and over by licenced qualified carpenter.
Ph 0407 919 919
QBCC 1161484

PAINTING

F.N. QUALITY PAINTING

EXTERIOR & INTERIOR - RSA LIC NO 720920

REASONABLE PRICE - ALL JOBS GUARANTEED
27 YEARS EXPERIENCE

FREE QUOTES & PENSIONER DISCOUNTS

PHONE BOB
3822 6018 OR 0411 804 309

MR. FIX ALL We maintain!

When you think of building and maintenance... CALL US!

Reputation and trust. Est. 31 Years
A.E. Price Pty. Ltd. Licenced Builders Also Painting Work Unlimited • Public Liability Insurance • Police Clearance
Member of the Redlands Coast Chamber of Commerce

Call Stiven: 0430 355 112 | info@mrfixall.com.au
QBCC 1114108 www.mrfixall.com.au QBCC, Builders 1314383

DOWN TO EARTH CARPET CLEANING & PEST CONTROL

ALL WORK GUARANTEED - PHONE STEVE ON 3245 3507 OR 0411 833 402

CARPET CLEANING SERVICES

- Carpet Cleaning
- Upholstery Cleaning
- Leather
- Walk on dry
- Free Deodorising & Sanitize
- Cars & 4WD's
- Asthma friendly when requested

PEST CONTROL SERVICES

- All general pest control and rodent control
- Termite Specialists
- Pre-purchases termite inspections
- Cockroaches, Spiders, Ants, Fleas
- Possum removal
- Bird control for solar panels and netting

QBSA 1080457

PATIOS, CARPORTS, PERGOLAS

PERGOLAS BRISBANE

We are Brisbane's leading pergola, deck, tiling and patio builders.

- Pergolas
- Patios
- Screening
- Decking
- Tiling
- Carports



GET YOUR FREE QUOTE

QBCC:15154266

25 YEARS OF BUILDING AND CONSTRUCTION EXPERIENCE

0493 126 828

pergolasbrisbane91@gmail.com
www.pergolasbrisbane.com.au



RENDERING

JC Rendering

Specialising in all types of acrylic, cement rendering, repairs & venetian plaster.

27 Years experience

Call: Warren
0412 697 202

QBCC 1053705

ROOF RESTORATION

NP ROOFING
SPECIALISTS IN TILED ROOFS

Repairs to all Ridge Cappings
Storm Damage & Insurance work

**3822 2921 or
0419 677 226**

nproofing@bigpond.com

QBCC 1057386 - ALL WORK GUARANTEED

SOLAR

Goodhew
Electrical & Solar

Licence No: 78875

- Solar Power
- Battery Storage
- EV Chargers
- Electrical
- Switchboards
- Air-Conditioning



Speak to the experts **07 3286 1422**
www.goodhewsolar.com.au

BOOK A TRADES AND SERVICES ADVERTISEMENT TODAY

From \$175 PLUS GST

Phone DAMIEN on
0421 786 302 or email
sales@market2market.com.au

SECURITY



BRISBANE
07 3200 9152

- ✓ Security Doors
- ✓ Plantation Shutters
- ✓ Insect Screens

kbsecurity.com.au

TREE AND GARDENS



TOM'S TREE WORKS

- Tree and palm removals
- Tree pruning
- Hedge pruning
- Stump grinding
- Pensioner discount



0412 314 840

PLUMBING

\$199 HOME PLUMBING CHECK & MINOR REPAIRS

ALL-INCLUSIVE
NO SURPRISES
UPFRONT TAX INCLUSIVE PRICING



Book Now

WHATS INCLUDED?

- Check all flexi pipes for rust
- Re-washer & re-seat up to 4 taps
- Toilets checked
- Hot water system inspected
- Fixed-price quote before any additional work is carried out



CALL TODAY
1300 161 655

Bacal & Co
PLUMBING

- Licenced Plumbers, Drainers & Gas Fitters
- Blocked drains & Hot Water Systems
- Guttering & Roofing
- General Maintenance & Leak Detection
- 50+ years in the industry

FREE QUOTES

PENSIONER DISCOUNT

3821 4224 / 3390 8338

QBCC LIC48757

admin@bacal.com.au

ABN 74 501 696 602

LOP CHOP CHIP Pty Ltd Fully Insured & Licensed



ALL ASPECTS OF TREE WORK INCLUDING:

- Tree Removal • Felling • Climbing
- Cherry Picker Tree Trimming • Pruning
- Block Clearing and Thinning Help with Council approvals Root Ball Removals
- Stump Grinding etc

Fully Insured • Over 20 Years Experience • Latest Machinery & Chippers
CALL **0408 151 730** Speak to Raice We service all bay islands

TV MAINTENANCE

TV'S . ANTENNAS . HOME THEATRE
INSTALLATION SERVICES

YOUR TV WILL LOVE YOU FOR IT



- TV TUNING
- TV POINTS
- WALL MOUNTING
- HOME THEATRE
- SATELLITE
- INTERNET/STARLINK

0449 947 247



SAM THE TREEMAN

- ★ Tree Lopping
- ★ Stump Grinding
- ★ Mulch Sales

FREE QUOTES FULLY INSURED FAMILY OWNED EST.1985
0421 356 174

PEST CONTROL

PEST CONTROL

Call now for a **FREE QUOTE** to get rid of the following pests:

- Cockroaches
- Mosquitoes
- Spiders
- Termites
- Silverfish
- Wasps/Bees
- Ants
- Rodents

CALL NOW **0408 380 867**

BOOK A TRADES AND SERVICES ADVERTISEMENT TODAY

From \$175 PLUS GST

Phone DAMIEN on
0421 786 302 or email
sales@market2market.com.au

BOOK A TRADES AND SERVICES ADVERTISEMENT TODAY

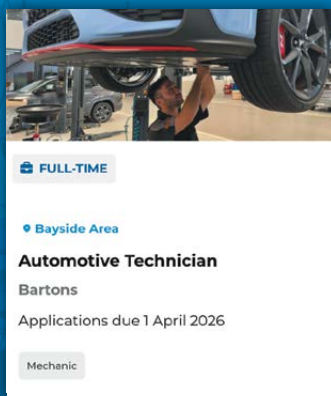
From \$175 PLUS GST

Phone DAMIEN on
0421 786 302 or email
sales@market2market.com.au



Local Jobs

If you're looking for a job or want to find a local worker, visit The Community Leader's Jobs section on the website.

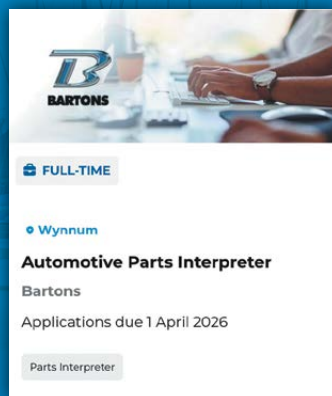


FULL-TIME

• Bayside Area

Automotive Technician
Bartons
Applications due 1 April 2026

Mechanic



FULL-TIME

• Wynnum

Automotive Parts Interpreter
Bartons
Applications due 1 April 2026

Parts Interpreter



FULL-TIME

• Bayside Area

Assistant Sales Manager
Bartons
Applications due 31 March 2026

Sales



The team from Bartons



SCAN TO LEARN MORE ABOUT **LOCAL JOBS**

Home Delivering More Good News to More People

The Community Leader is a monthly publication, home delivered to parts of Alexandra Hills, Birkdale, Capalaba, Cleveland, Ormiston, Redland Bay, Thornlands, Thorneside, Victoria Point and Wellington Point. Please note that if your home has a 'no junk mail' or 'Australia Post Only' label, then we are unable to deliver the newsletter to you. However, copies will be available around the local area for you to read. If your home does not get a copy, you can collect one from a local pick up point. Maps are subject to change and availability of walkers, however the total number of copies delivered remains constant.

Any submissions can be emailed to sales@market2market.com.au for consideration.

LOCAL PICK UP POINTS

Various shopping centres, cafes, clubs and local businesses.



The Community Leader

WE'RE ALL ABOUT GOOD NEWS

ADVERTISEMENT SIZES

Full Page	Image Area	285mm deep x 255mm wide
Half Page	Image Area	128mm deep x 255mm wide
Quarter Page	Image Area	65mm deep x 255mm wide
Eighth of a Page	Image Area	65mm deep x 125mm wide
Strip Ad	Image Area	40mm deep x 255 mm wide

JULY BOOKINGS

- Community editorial 9th of June
- Advertising cut off 12th to 15th of June
- Distribution to commence 29th of June
- Bookings are for a minimum of 3 months and space is limited
- Market to Market Communications reserves the right to refuse any advertising
- **Advertising contact 0421 786 302 or sales@market2market.com.au**

DISCLAIMER While the publisher of The Community Leader has made every attempt to ensure that the content contained herein was accurate at the time of printing, the Publisher does not assume any liability to any party for any loss or damage caused by errors or omissions. Views expressed herein are not necessarily the views of the Publisher. All brands and trademarks published are the property of their respective owners. The Publisher reserves the right to refuse any advertising at its discretion. Delivery suburbs and streets are subject to changes, however the total number of copies delivered each month remains constant. Houses on acreage and Australia Post Mail/No Junk Mail' signs cannot be delivered to. For full terms and conditions relating to home delivery, please visit the website of our distribution partner, IVE, here: <https://www.ivehub.com.au/public/legal/ive-distribution-general-terms.pdf>

SLEEMAN SPORTS COMPLEX WELCOMES THE WORLD'S FASTEST BMX RIDERS

Chandler is set to welcome the UCI BMX Racing World Championships this July, where more than 3,000 riders from around the world will compete at the Sleeman Sports Complex.

Featuring a world-class, 400-metre BMX Racing Track, Sleeman Sports Complex is set to showcase the sport at its very best across 8 days from 17 to 25 July and add to Brisbane's growing legacy in BMX Racing.

The facility is the training ground of many of Australia's top riders, including Olympic Champion Saya Sakakibara, who is vying to win the coveted 'rainbow bands' on home turf in front of her friends and family.

Sleeman Sports Complex events manager Lisa Moczynski said the event will be a great opportunity to showcase elite cycling and inspire developing riders.

"We're expecting a great turnout of riders and spectators at the UCI BMX Racing World Championships, when we'll witness history right here in our own backyard and watch the world's fastest BMX riders compete up close," Ms Moczynski said.

"Having such a prestigious event at our venue really helps establish it as a premier destination for global cycling competition, training, development and junior participation, and it's such a win for our onsite cycling community."

Locals will have the rare opportunity to watch the world's fastest and most decorated BMX riders compete, with several ticket options available to suit families and avid fans alike.

With a diverse range of world-class facilities, Sleeman Sports Complex is a Stadiums Queensland venue that supports everything from high-performance training to community sports and recreational activities.



Photo: Supplied.

Stadiums Queensland chief executive Todd Harris said the track is ready to welcome the best in the world.

"The track incorporates the latest international design and construction, helping to not only ensure we attract top events, but also support the top local and national riders who train here," Mr Harris said.

"Our investment in the venue is part of our long-term vision for Sleeman Sports Complex to remain an epicentre of community and high-performance sport in Australia, and ensure Queensland is well-positioned in the lead up to 2032."

For more information and tickets, visit <https://sleemansports.com.au/events/026-uci-bmx-racing-world->.

FREE CELEBRATION FOR NAIDOC WEEK 2026 IN REDLANDS

BY ASHLEIGH HOWARTH

A free community event will be held on the Redlands Coast to launch NAIDOC Week 2026, inviting residents to come together to celebrate culture, connection and "Fifty Years of Deadly".

The Redlands Coast NAIDOC Cultural Celebration will be held on Sunday, July 5, at Raby Bay Harbour Park in Cleveland, offering fun for all ages between 9:00am and 2:00pm.

The event will open the national week of recognition, which celebrates the history, culture and achievements of Aboriginal and Torres Strait Islander peoples.

Headlining the day will be performances from First Nations artists, including Joe Geia and band, alongside the Yulu Burri Ba dancers.

Mayor Jos Mitchell said the event plays an important role in strengthening cultural understanding across the region.

"The Redlands Coast NAIDOC Cultural Celebration is a free event that celebrates First Nations heritage and the richness of Aboriginal and Torres Strait Islander languages, arts, dance and music," she said.

"By making First Nations culture visible and accessible, events such

as this helps break down barriers, challenge misconceptions and build mutual understanding.

"This results in a more inclusive and respectful community.

"I encourage everyone to come along on the day to enjoy a vibrant program that celebrates this year's NAIDOC Week theme, Fifty Years of Deadly.

"This includes powerful live performances by First Nations artists, a traditional smoking ceremony, cultural demonstrations and storytelling.

"There are also weaving workshops, activities for children, giveaways, market and information stalls, and opportunities to connect with local organisations."

Attendees are encouraged to bring picnic blankets or chairs to enjoy the open-air setting.

The celebration is delivered by Redland City Council in partnership with Yulu-Burri-Ba Aboriginal Corporation.

NAIDOC Week will run nationally from July 5 to 12 with events held across the country.



Photos: Supplied.

YOUR LONGEVITY ERA: SIMPLE HABITS FOR A STRONGER, SHARPER YOU

BY CHEREE SHELDON, QUALIFIED NATUROPATH, FLANNERY'S ORGANIC WHOLEFOOD MARKET, VICTORIA POINT TOWN CENTRE HOME CO.

When we think about longevity, it's easy to focus on how long we live. But increasingly, the conversation is shifting from lifespan to 'healthspan'. The goal isn't just more years, but better ones: more energy, clearer thinking, stronger movement, and a deeper sense of wellbeing.

Small Habits, Big Life

Across studies and cultures, long-living populations share common lifestyle patterns. These individuals challenge their brains regularly through learning, creativity, and new experiences. They stay socially connected, recognising that community plays a central role in both mental and physical health. They actively manage stress, whether through time in nature, mindfulness, or setting clear boundaries. And importantly, they move their bodies consistently – not in extreme bursts, but in steady, regular ways.

What's most encouraging is how achievable this is. Longevity isn't built on perfection or rigid routines. It grows from simple, repeatable behaviours done consistently and with purpose.

Nutrition is one of the most powerful tools for supporting healthy ageing.

The key lies in keeping inflammation low,

metabolism balanced, and the brain well-nourished. A diverse, plant-rich diet is a strong foundation. Think vibrant vegetables, seasonal fruits, herbs, and whole grains. Aim for a spectrum of colours to provide different antioxidants and phytonutrients that support cellular health.

Healthy fats are essential. Foods like extra-virgin olive oil, nuts, seeds, and oily fish support brain structure, hormone balance, and cardiovascular health. Alongside this, protein becomes more important with age, helping to maintain muscle mass, support immunity, and regulate blood sugar.

Fibre also plays a vital role, particularly in gut health. A well-supported microbiome influences digestion, mood, immunity, and energy. Whole foods such as legumes, oats, vegetables, and fermented options like yoghurt and sauerkraut help nourish this internal ecosystem.

Even meal timing can have an impact. Eating larger meals earlier in the day and avoiding late-night eating may support metabolic health, energy levels, and sleep quality.

Supporting Energy from Within

At a cellular level, ageing is closely linked to how efficiently we produce energy. This process relies

heavily on the mitochondria, often referred to as the body's energy centres.

Supporting these systems through balanced nutrition and key nutrients can help maintain vitality over time. Antioxidant-rich foods help protect cells from oxidative stress, while nutrients involved in energy metabolism play a role in sustaining cellular function.

Hydration is another essential, yet often overlooked, factor. Even mild dehydration can contribute to fatigue, headaches, and reduced concentration, making consistent fluid intake a simple but powerful habit.

Sleep is one of the body's most important repair processes.

During the night, the brain clears waste, consolidates memory, and supports mood regulation. Establishing a consistent sleep routine and getting regular morning sunlight can help regulate circadian rhythms, particularly as they naturally shift with age.

Cognitive health is equally vital. While some changes in memory may occur over time, a significant decline is not inevitable. Staying mentally active, socially engaged, and physically well can all help

preserve brain function in the long term.

Physical strength is one of the strongest predictors of healthy ageing.

Muscle mass supports metabolism, balance, and independence, while bone and joint health underpin mobility and resilience.

Regular movement throughout the day – whether walking, stretching, or simply breaking up long periods of sitting – helps reduce inflammation and support blood sugar balance. In addition, incorporating strength training a few times each week can have profound benefits for long-term health.

Small Habits, Lasting Impact

Longevity doesn't come from one perfect routine. It's built through small, consistent actions that compound over time.

Whether your focus is supporting energy, staying strong, or protecting your cognitive health, the choices you make each day matter. With the right foundations – nutrition, movement, sleep, and connection – you can create a future that feels not just longer, but fuller, stronger, and more vibrant.



Stay well with Flannery's Organic Wholefood Market

SAVE 20% off all Vitamins & Supplements the first Friday & Saturday of each month! Plus, free naturopath advice in store.

Find us at Victoria Point Town Centre HomeCo.
For more locations visit flannerys.com.au

*For members only, it's free to join in store. Not in conjunction with other offers.

FLANNERY'S
ORGANIC • WHOLEFOOD • WELLNESS

SPINACH, FETA AND RICOTTA MUFFIN POT PIES RECIPE

These savoury little muffin pot pies are everything you want in a portable comfort bake. They've got golden, flaky pastry on the outside and a creamy, cheesy spinach filling on the inside. They're just as at home on a lazy weekend brunch table as they are packed into a picnic basket or lunchbox. Enjoy them warm and puffed from the oven, or cold when you need an easy grab-and-go bite.

INGREDIENTS

- 1 tbsp of olive oil
- 1 small onion, finely diced
- 2 garlic cloves, finely chopped
- 250g frozen spinach, thawed and squeezed dry
- 250g ricotta cheese
- 150g feta, crumbled
- 1 egg
- A pinch of grated nutmeg
- Salt and pepper for seasoning
- 1 sheet of frozen puff pastry, slightly thawed (or perhaps 2 sheets, depending on your muffin tin size, and how clever you are at cutting circles!)
- Grated mozzarella cheese – about a 1/4 of a cup

METHOD

1. Lightly grease a 12 cup muffin tray with butter or a spray of olive oil.
2. Grab your frypan, pop it on the stove top and heat the olive oil over a medium heat. Fry the onion until it's soft, then add the garlic and cook for another minute.
3. In a large bowl, combine the spinach, ricotta, feta, cooked onion/garlic, egg, salt, pepper and the nutmeg.
4. Use a round cookie cutter or the rim of a glass or bowl to cut circles from the puff pastry (about 12-14cm in diameter so they can line the base and sides of your muffin tin). Press each pastry circle into your tin, so it lines the base and sides of each muffin space.



5. Spoon the spinach ricotta mixture into each pastry cup, almost to the top. Grate the mozzarella over the top of each one.
6. Bake at 200°C (fan 180°C) for 20 to 25 minutes, until your pies are puffy and golden.
7. Let them cool for 5 minutes before lifting them out of the pan. Serve hot or cold.

Serving suggestions: Top with a dollop of sweet chilli sauce, tomato sauce, or chutney.



- + Split System Air Conditioners
- + Ducted Air Conditioners
- + Safety Switches
- + Switchboard Upgrades
- + Phone & Data Points
- + Electrical Inspections
- + Ceiling Fan Replacements & New Installs
- + EV Charge Points
- + Warehouse & Factory Lighting
- + HVAC Repairs & Maintenance
- + Security Lighting
- + Pool Circuits & Lighting
- + Smoke Alarms & Compliancy

+ Fully Licenced
+ ARCTick Approved






Call us today
and ask about our
Satisfaction Guarantee!

**Winner of the 2023 APAC
Australian Enterprise Awards
for the Most Trusted Electrical
& Air Conditioning Contractor**



1300 452 742

www.jaricgroup.com.au

BAY FM SHOW GETS NATIONAL RECOGNITION WITH PRESTIGIOUS AWARD NOMINATION

Redland City's vibrant airwaves are making national headlines! *So Bae Party Mix*, the much-loved LGBTQIA+ radio program on Bay FM 100.3, has been nominated for *Best Non-Commercial Program* at the inaugural Australian Audio Awards 2026.

Produced and hosted by Tony Tranter, the intoxicating weekly show stands shoulder-to-shoulder with some of Australia's most influential broadcasters, including Triple J, ABC National, and SBS – a testament to its creativity, originality, and devoted listenership.

Dubbed a celebration of music, diversity and community, the show has been broadcast live every Sunday night for the past five years, making *Bae Party Mix* a cornerstone of Redland City's Queer cultural landscape. The show delivers a high-energy blend of music spanning genres and decades, paired with engaging interviews featuring local rising stars, local legends, national icons, and international divas. With a mission to celebrate diversity and amplify LGBTQIA+ voices, the program has consistently pushed creative boundaries.

In the past year, *So Bae* delivered an impressive 17 Australian radio-first moments – an achievement that helped secure its nomination in this fiercely competitive category.

A glittering awards ceremony at the iconic Carriageworks in Sydney will take place just prior to this issue going to print, so stay tuned in June for results.



So Bae Party Mix team from Bay FM. Photo: Supplied.



PUBLIC NOTICE

Date issued: 21 May 2026

Intention to cancel historical right to interment reservations at Cleveland Cemetery.

Council gives notice of the proposed cancellation of historical right to interment reservations made prior to 1 January 2001. This will only affect reservations where a right to interment has not been fully paid, therefore a right to interment has not been issued and remains under the control of Redland City Council. This does not affect any graves that contain a burial and only applies to right to interment that are unpaid and been on reservation for over 25 years.

Council is seeking to contact the following individuals:

- Those associated with a historical right to interment reservations at Cleveland Cemetery made prior to 1 January 2021,
- The heirs or successors of reservees where there is evidence that the original reservee has passed away and interred outside the reserved allotment.

The persons listed within this notice, or their heirs and successors may renew their reservation by contacting Cemeteries and Interments Services at Redland City Council on 3829 8999 within 60 days of this notice. Failure to respond within the specified period will result in the cancellation of the reservation and it returned to the cemetery's available allotments for future use.

Names listed may be incomplete or abbreviated. Families and representatives who believe they may have a reservation at Cleveland Cemetery are encouraged to contact Council to verify records.

C 3	Donovan	C 391	Crabb	P 762	Harrison
P 7	Nutt	C 392	Crabb	P 772	Banks
P 73	Ridge	C 402	Scholtes	P 773	Shidon
P 74	Webster	C 403	Scholtes	P 795	Davies
P 75	Webster	C 404	Scholtes	C 803	Skok
P 76	Jones	C 409	Leimena	P 805	Bromley
P 79	Colborne	C 416	Spalka	P 806	Motbey
P 80	Ziggs	C 423	Mellor	P 807	Faint
P 81	Williams	C 424	Mellor	P 808	Faint
P 119	Chisholm	C 425	Brooks	P 810	Faint
P 121	Phillips	C 446	Bradley	P 811	Faint
P 124	Fox	C 465	Mellor	P 814	Nielsen
P 134	Ohl	P 471	Wort	C 834	Millar
P 139	Follia	P 482	Manganaro	P 840	Darby
C 197	Ferguson	C 500	Elder	C 858	Mangano
P 202	Barnes	C 538	Burnes	P 868	McAmley
P 262	Morris	P 555	Booth	P 883	Hutson
C 273	Woodward	P 612	Henning	P 884	Hutson
C 301	Biddle	P 629	Christina	C 961	Natgrass
C 350	Bonnetaub	P 702	Decman	C 1003	Ragonesi
C 359	Franke	P 704	Ruster	P 1264	Inwood
C 372	Banks	P 707	Meikle	P 1406	Tickle
P 385	Boughen	P 736	Williams		
P 387	Murray	P 742	Cook		

C Catholic
P Protestant

redland cemeteries

3829 8999

Please note: Council will not be taking enquiries from the community to purchase new right to interments within the Cleveland Cemetery until waiting periods have been undertaken and the existing waiting list has been contacted.

LOCAL GARDENING WITH KAT

STAND TALL: NORFOLK ISLAND PINE IS A FORESHORE STAPLE

BY KAT PEARSON, *GIRL IN THE GREEN*

Following on from our previous foray into Moreton Bay figs, another foreshore staple is the Norfolk Island pine (*Araucaria heterophylla*). Not, in fact, a pine, but related, so we'll forgive that. The Norfolk Island part is real, though – they are endemic to (i.e. only found natively on) the tiny Norfolk Island, having evolved in isolation from other *Araucaria* species found in the Pacific.

Luckily, waaay back in 1774, Captain Cook spied them and thought they'd make great ship masts, being so straight and tall. He was wrong – they were too weak, but they soon became popular ornamental trees, both in Britain and Australia, where they were commonly planted as landmarks (shout out to the trees on Shore Street North in Cleveland, which were planted in the early 1860s). They also make good houseplants and an alternative Christmas tree for warmer climates.

Norfolk Island pines are slow-growing but can reach 50-70 m, with straight trunks and an overall pyramidal shape. Young trees have branches that are horizontal to upright, but branches on old trees (the Norfolk Island locals told me the 'over 60s') start to droop. A bit like humans, I guess!

Each 'level' of the tree has around five evenly spaced branches that are made up of scaley leaves – they are actually quite different to the slender needles of real pine trees. Just like other *Araucaria* species, they are usually dioecious, meaning there are male and female trees – the difference lies in the cones they produce. Male cones are usually smaller and less obvious, whilst the female cones are larger. The birds and bees story: is pollen from the male cones' floats on the wind to the female cones, the female cones are fertilised, seeds are formed, the female cones fall and disintegrate, the seeds fall out, they germinate, and voila! Baby Norfolk Island pines.

Other popular Norfolk Island pine relatives are the Aussie native Bunya pine (*A. budwillii*) with their HUGE edible bush tucker cones and the similar-looking Hoop pine (*A. cunninghamii*). To tell the difference between the Hoop pine and the Norfolk Island pine (both of them are popular in our area), look at the form of the tree. Hoop pine trees have a 'lumpier' look with the leaves clustered more densely in blobs towards the end of branches. The bark of a Hoop pine also flakes horizontally (this is where hoop pine mulch comes from!), whilst the Norfolk Island pine trunk is smoother.



A Norfolk Island pine in Wynnum. Photo by Kat Pearson.

WRAPPED IN LOVE: LOCAL QUILTERS PARTNER WITH REDLAND HOSPITAL

FROM THE DONALD SIMPSON COMMUNITY CENTRE

The Donald Simpson Community Centre (DSCC) is proud to announce a heart-warming new collaboration between its DSC Matilda Quilters Group and the Redland Hospital Intensive Care Unit (ICU). This initiative focuses on providing hand-knitted and quilted blankets to patients approaching the end of life, offering a tangible layer of warmth and dignity during their final journey.

Recognising that the clinical environment of an ICU can often feel daunting, the Matilda Quilters have dedicated their time and skill to creating unique, soft blankets. These blankets serve as a gentle reminder to patients and their families that they are surrounded by the care and support of their local community.

The project is the result of close coordination among the DSCC leadership, the quilting convenors, and the frontline social work team at Redland Hospital.

"In those incredibly difficult and emotional moments, small acts of comfort and dignity mean the world," says Thomas Jithin, CEO of the Donald Simpson Community Centre. "These blankets are a beautiful testament to the skill and massive hearts of our volunteers."

Each blanket donated carries a special tag: Made with love by Matilda's Quilters and Crafters – DSC.

The group members are thrilled to support this project, and many of them have donated wools and fabrics to keep it going for the hospital on a needs basis, says Carla Mason, Convenor of DSC Matilda Quilters.

This partnership has been made possible through the dedication of DSC members who attend the Matilda Quilters group every Monday from 8:30am to 11:30am, followed by a new fortnightly program on Thursday evenings from 6:00pm to 9:00pm.



Photo: Supplied.

"The blankets are also a reflection of what makes the Donald Simpson Community Centre so special. Our members do not simply gather for activities; they use their skills, time and compassion to make a real difference in the lives of others," says Brian McDonald, DSC's chairman.

LOCAL READERS – A BOOK REVIEW

WHAT WE CAN KNOW BY IAN MCEWAN

BY ANNE CROWLEY

WHAT THE EXPERTS SAID

"A century from now, a literature scholar pieces together a picture of our times in a novel that quietly compels us to consider the moral consequences of a global catastrophe." *The Guardian*.

The book's epigraph sums it up well: "It concerns the kind of human truth, poised between fact and fiction, which a biographer can make as he tells the story of another's life, and thereby make it both his own (like a friendship) and the public's (like a betrayal). It asks what we can know, and what we can believe, and finally, what we can love".

MY THOUGHTS

A Russian warhead detonates accidentally in the mid-Atlantic, triggering a tsunami that – compounded by rising sea levels – leaves little standing beyond a Europe-wide archipelago of mountain tops.

Part 1 is narrated by Tom Metcalfe, a literature lecturer at a British university in 2119 – a place far more interested in science and maths than poetry. He becomes fixated on tracking down a lost poem: a "Corona" (15 sonnets linked in a chain, with the last looping back to the first), supposedly written by Francis Blundy, a (fictional) poet who read it aloud to his wife as a 50th birthday gift in 2014.

Metcalfe is consumed by the Corona, by Blundy, and especially by Blundy's wife, Vivien. He trawls articles, social media and journals to piece together a portrait of the missing "masterpiece", the couple, and the contemporaries invited to that party. And becomes besotted with Vivien in the process.

Frankly, I found Part 1's singular focus and verbosity extremely tedious. I didn't share Metcalfe's fascination with the poem, and still less with his detailed conjectures about the mundane aspects of this group's lives.

I began to suspect the poem never existed – and even if it did, I kept thinking: who cares (apart from Metcalfe)? Even the audience at the supposed reading seemed bored to tears!

For me, the only compelling moments in Part 1 were when Metcalfe briefly diverged from his obsession to make passing comments on the forces behind the global catastrophe – and its aftermath. Almost incidental to the plot, these remarks read as prescient warnings for people in our own time to change course on war and climate.

Thank goodness for Part 2! Here, the story shifts from biography to autobiography, narrated succinctly in the voice of someone who was actually there. It's far more engaging than Metcalfe's arrogantly surmised bland version of events, for example, the real Vivien is complex – and not quite the devoted wife-and-muse figure Metcalfe assumed and admired.

The contradictions of Part 1 found in Part 2 neatly expose the limits of a historian's ability to capture personality and relationships from secondary sources – especially when the people involved have worked hard to conceal the truth and deflect public scrutiny. This, I think, is where the novel shows us 'what we can know'.

My book club mates were evenly (and strongly) divided on their opinions of Part 1, but everyone enjoyed Part 2. And we all agreed there was a huge amount in the book worthy of robust discussion.

**LOCAL POETRY****VIGNETTE**

BY GEOFF SMILEY

A mature aged woman sits alert in the coffee shop waiting it seems, for others. Then an anxious young woman with pram, negotiating tables and people, arrives.

The miracle of family then happened. Grandmother warmly greeting her child and grandchild. They settle into the booth, child between the daughter and her grandmother.

They change into a family, settled and relaxed. Grandma attends to the child touching her, celebrating her. The child plays happily. Daughter enjoys that interaction and sharing care with another.

Then a further change occurs. The daughter and mother turn to celebrate their bond. They become mother and child as the parent becomes dependent, relaxing into her mother's love.

They go back to the once were interactions of the past and she allows her mother be parent to her and her child.

The baby is quiet, content it seems. It is a time of support for a busy mother; a confirming interlude for a grandma; and respite for a well-loved child.

Grandmother, Daughter; Child - a vignette of beauty.

© Geoff Smiley



SUPPORTING OUR KOALAS DURING DISPERSAL SEASON

FROM REDLAND CITY COUNCIL

Koala dispersal season is now underway on Redlands Coast, marking an important milestone for the region's local koala population.

At this time of year, young koalas leave the safety of their mothers and begin the journey to establish their own home ranges. It's a critical stage in their development – and one that plays a key role in the future of koalas locally. Each young koala that successfully settles helps build a stronger, more resilient population.

As these young travellers move through the landscape, you may notice them more often. Koalas are more likely to be seen crossing roads, moving through yards or resting in unfamiliar locations. While this increased activity is a natural part of dispersal, it also means they face greater risks in our urban environment.

The community can play a vital role in helping keep koalas safe during this busy period. Simple actions can make a real difference:

- Slowing down on roads, particularly between dawn and dusk
- Keeping dogs on leads and safely contained at night
- Ensuring yards are koala-friendly with features such as fence and pool escape routes.

As they move between locations, it can be normal for koalas to rest low in trees or briefly on the ground. However, if a koala appears disoriented, lethargic or in immediate danger, you should seek help.

Trained wildlife volunteers are available 24 hours a day via the Redlands 24-hour Wildlife Rescue Service on 3833 4031.

By staying aware and taking a few simple precautions, our community can help support young koalas as they find their place – ensuring this iconic species continues to live alongside us.



Photo: Supplied.

Young koalas are on the move

Look out for them on the road.

 redland.qld.gov.au/koala
 3829 8999
 



NATURALLY WONDERFUL ... WITH RANGER STACEY

RANGER STACEY THOMSON IS PRINCIPAL ADVISER – COMMUNITY EDUCATION (REDLAND CITY COUNCIL)

If I could choose a wild soundtrack to accompany winter on Redlands Coast it would be a humpback whale underwater symphony.

Right now, these majestic marine mammals are cruising north along the east coast of Australia. Their annual migration from Antarctica to warmer Queensland waters culminates with well-earned rest and reproduction, before they embark on their epic return journey.

My tip for the ultimate whale watching experience is to perch on top of Point Lookout, one of the best land-based whale watching vantage points in Australia.

While energetic whales frolic their way through winter, our wild resident reptiles are feeling the chill, making them super sluggish. Normally, the grounds of Redlands IndigiScapes Centre are teeming with water dragon activity, but lately they've gone to ground seeking shelter in burrows or under rocks.

A dormant period called brumation is how many reptiles survive low temperatures and decreased daylight hours. Unlike hibernation, which involves deep sleep, cold-blooded creatures (ectotherms)

conserve energy by significantly slowing down their heart rate, metabolism, and respiration.

It's why we don't see as many snakes in winter. Grabbing a tasty meal isn't even on their radar, as digestion requires a warm body temperature. In fact, a belly full of food in winter would likely rot, rather than be digested.

I love exploring nature on a crisp, fine day. And while encounters with reptiles and amphibians are rare right now, other native species such as koalas continue life as normal. A coat of insulated fur helps keep them warm, and they sleep in a hunched position to conserve heat.

Possums and gliders prefer to cosy up through the day in a hollow, nest box, or drey. Your best chance to spot a wallaby is to venture outdoors around dawn or dusk. A wallaby's coat provides natural protection from the elements, as well as camouflage.

As for echidnas, they're super cute and wonderfully adaptable. Peak activity for these monotremes is when temperatures sit between 16 and 20 degrees Celsius; therefore, winter in south-



Photo: Supplied.

east Queensland is ideal for foraging ants and termites. It's also breeding time!

It may be chilly, but remember, there is still plenty of wildlife activity. Drive slowly, especially through vegetated areas, and watch for wildlife on the roads.

Until next time ... Stay Wild!

Ranger Stacey

COMMUNITY ORGANISATION PROFILE

AUSTRALIAN GIRL GUIDES: GUIDING PRINCIPLES

BY JAN NARY

Barb Hodgkinson was marked for a future in the Australian Girl Guides from her early days.

"My mother was in the Guides in the '30s and she loved Guiding," says Barbara.

"I had two older brothers who were very sporty, so it was something different for a girl to do. When a friend took me to a 'bring a friend' night, I was hooked. I joined at the age of seven, and apart from ten years I took off to have my own children, I've been involved ever since."

Barb is now the Moreton Region Manager, in charge of seven regions that extend from the bayside to the city, and her passion for guiding is unabated.

"Guiding is such a wonderful opportunity to learn skills that you ordinarily wouldn't – either because you're a girl or because you just don't have the opportunity. I learned how to camp in a tent – my family weren't campers, but I loved it; I loved learning knots and how to hand-sew. I remember the first time I lit a match it was like conquering the world. We still have girls who've never lit a match. Guiding teaches basic life skills and I think it's probably more relevant today because today parents are time poor and often both parents work."

Barb says that girls are often attracted by word-of-mouth from their peer group.

"A guide may go back to school and tell her friends that she's been camping without her parents – that she's been abseiling, or kayaking, or done archery or cooked damper on a campfire – she's stepped out of her comfort zone and done things she's never had the opportunity to do – in an all-girl space. As one of my 12-year-olds said, 'we make unexpected friendships'."

While there have been some changes – an updated uniform and possible merging of different age groups – some things remain the same. Core skill badges of proficiency still exist – as does knot tying. An innovation in knot tying is that knots can be tied in snake lollies; a successful knot entitles the Guide to eat it!



Photo: Supplied.

LOCAL FISHING WITH SPERO

WINTER WATERS ARE SWIMMING WITH WHITING, MACKEREL AND SNAPPER

BY SPERO KARTANOS

Well, winter is here, and if a few days in May did not get us ready for how cold it's going to be in June, then nothing will! It's always good fishing in Moreton Bay in winter, so while we complain about the cold mornings and cold westerly winds, the prize is that we bring home fish for dinner.



Whiting will be around the bay, especially at Banana Banks, Amity Banks and Fisherman's Gutter.

You should find them in greater numbers, close to the east of Darcy Light, all the way to the Port area. For bait, prawns and yabbies seem to work, but I find bloodworms and cured beach worms are the best.

The school mackerel will be around from Green Island to Ormiston, around the Hope Banks, Rainbow Channel and One Mile, and also between the Lazaret Gutter and Amity Banks.



Photos: Spero Kartanos.

Fish for squire and snapper around the Bay Islands and the artificial reefs. The cuttlefish and arrows will (hopefully) be in the deeper water east of Wello, Green and St Helena.

So, there is plenty to chase in our beautiful bay this month, but a word of warning for small boat owners: remember, when there are westerly winds, it's calm going out, but terrible coming back, and

most of our boat drownings have happened with strong westerly winds.

Sometimes, you just have to say, "I will go another day rather than risk my life and the lives of others in the boat".

REDLANDS PLAYGROUNDS SERVE UP BIG FUN ON A BUDGET

BY ASHLEIGH HOWARTH

If you're chasing an easy day trip that won't blow the fuel budget, Redlands Coast has you covered – especially when it comes to playgrounds that can keep the kids entertained for hours.

Packed with a mix of imaginative play spaces, ample green spaces, coastal views and picnic-perfect spots, the city's parks are ideal for letting the little ones burn off that extra energy.

Whether your family has been there before or you're looking for a new play destination, here are some of Redlands Coast's best playgrounds worth adding to your weekend hit list.

A standout is Thornlands Community Park, a fully fenced playground designed for all ages and abilities. Its towering fort structure features climbing towers, netted walkways, observation decks and giant slides, alongside a flying fox, swings, large climbing mounds, sandpits with diggers, a quaint little cubby area and even a ninja-style obstacle course. There's also a dinosaur dig area where kids can pretend they are uncovering the bones of a prehistoric animal for the first time, plus nature play zones with stepping stones and water features.

For bayside fun, Raby Esplanade Park is hard to beat. Its 200-metre scooter and bike track – complete with road signs and roundabouts – is a hit with young riders. Add in climbing structures, water play, a

fish-and-chip-themed play area and even a half basketball court, table tennis and an outdoor gym, it's easy to spend the whole day here.

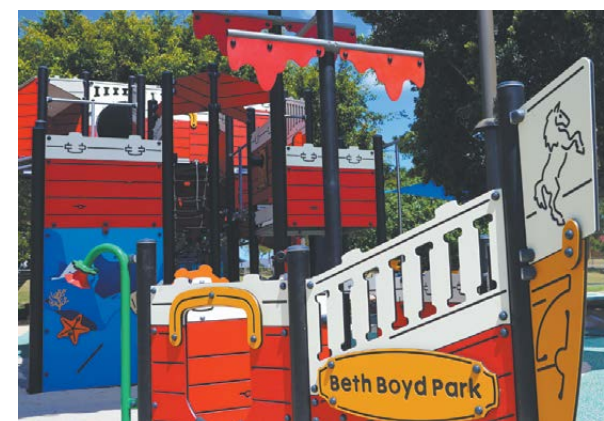
Further south, Jingeri Park in Redland Bay brings a touch of coastal charm, with an 8.5-metre lighthouse and jetty forming the centrepiece, paying homage to the picturesque bayside setting. Kids can zip down the tunnel slides, tackle climbing walls, swing high on the swings, or enjoy the green open space.

For something a little more magical, Apex Park in Wellington Point delights with its fairy-themed playground, complete with a gumnut house and in-ground trampoline.

Newer additions like Casuarina Park in Victoria Point focus on nature-based play, while Beth Boyd Park in Thorneside offers marine-themed adventures and nearby café options.

And if you're keen to mix playtime with a seaside stroll, Wellington Point Recreation Reserve combines a great playground with access to the iconic King Island sandbar walk at low tide.

So, pack the snacks, grab the sunscreen and round up the kids – your next affordable and memorable adventure might be closer than you think.



Photos: Supplied.



MCCARTNEY FAMILY FUNERALS

When families in Cleveland need care, they turn to people they know and trust.

At our Cleveland office, Lea-Anne, Debbie and Shannon are more than Funeral Directors – they are steady, compassionate guides when families need support the most.

With nearly 60 years of combined experience in funeral service, their knowledge, professionalism and understanding ensure every family feels supported, respected and genuinely cared for.

Together, they bring depth of experience, steady guidance and genuine compassion – ensuring every family feels supported with clarity, confidence and care.

We are proud to serve the Cleveland and Bayside community with a team families can trust.



It's a family thing.

9/21 Waterloo St, Cleveland | mccartneyfunerals.com.au | 1300 043 522
Local Family Owned and Operated. Caring for Families in the Cleveland and Bayside areas.

CAR REVIEW

RENAULT DUSTER EVOLUTION 4X2

BY JOHN VANDERMAAT



The Renault Duster Evolution 4x2 that I had the opportunity to test drive for a few days was my first encounter with the Renault brand. The model I drove was at the lower end of the range, but it still delivered a nice finish and a good level of comfort.

The Duster is on the smaller side compared to many SUVs on the market right now, but it doesn't feel cramped at all. There's plenty of space for four adults, and the boot is more than capable for everyday use or a weekend away. I also liked that it has a full-size spare tucked away neatly – something you don't always get these days.

As a lower-spec model, my test vehicle lacked some features that have become standard in many modern cars. This entry-level version does not include blind-spot monitoring or front parking sensors and is equipped with only a rear-view camera. However, it comes at an attractive price point. Drivers seeking additional features may want to consider the Techno version, which includes many more of these desirable extras.


I took the Duster up to Mount Glorious and found its performance while climbing the mountain quite impressive for a 1.3-litre engine. The 7-speed automatic gearbox, coupled with front-wheel drive, provided good response and handling on the twisty roads. I felt confident in the car's road-holding capabilities throughout the drive.

Overall, I found the Duster to be a really enjoyable and easy car to live with. Its biggest selling point is definitely the value for money, especially at the lower end of the range. And if you're willing to spend a bit more, there are plenty of options to dial up the comfort and safety, including the Techno and 4x4 mild-hybrid versions.

Thanks go to Bartons for supplying the Renault Duster Evolution 4x2 for review.



Photo: Supplied.



GEELY | CAPALABA

BRISBANE'S NEWEST GEELY DEALER

GET \$1,000 FUEL CARD OR \$1,000 EVIE CHARGE CARD WITH YOUR PURCHASE

0.88% PA COMPARISON RATE*


\$0 deposit requirement for a 36-Month Term*. PLUS Geely EX5 comes with a free EV Home Charger*.



Geely EX5 Complete

From \$44,808


Drive Away



Geely EX5 Inspire


From \$48,888

Drive Away


GEELY | CAPALABA
GEELYCAPALABA.COM.AU

226-228 OLD CLEVELAND RD, CAPALABA 07 3245 2200 AFTER HOURS HOTLINE: JUSTIN 0407 646 517

SCAN TO VIEW STOCK



*Finance comparison rate based on a secured consumer fixed rate loan of \$30,000 over 5 years. WARNING: Comparison rate applies only to the example given and may vary depending on loan amount, term, fees and charges. Credit criteria, fees, charges, T&Cs apply. Offer available on new Geely EX5 Extended Range stock vehicles only and cannot be combined with other offers. Finance available to approved applicants only, excluding government, fleet and rental buyers. Applications must be approved by 30 June 2026 and settled by 11 July 2026. *No deposit or balloon payment available. 36-month term only. Finance provided by Allied Retail Finance Pty Ltd trading as Geely Finance ABN 31 609 859 985 Australian Credit Licence 483211. *EV Home Charger Offer available on new Geely EX5 Extended Range stock vehicles only. Includes one 7kW single-phase AC home wall charger (hardware only). Installation not included. Charger is non-transferable, non-redeemable for cash and supplied subject to availability. Charger brand/model may vary. South Australian installation restrictions may apply. See your local Geely Dealer for full details. BARC216759_0526

EOFY? WE PREFER...

BEEFY

BARTONS **ENORMOUS** END OF FINANCIAL YEAR

BARTONS EOIFY NOW ON!

NEW CARS
10 Year Warranty*

USED CARS
5 Year Warranty*

BARTONS EOIFY NOW ON!



BARTONS EOIFY NOW ON!

\$1,000 Fuel Card²
OR
\$1,000 Evie Charge Card¹
ONLY ON NEW VEHICLES

BARTONS EOIFY NOW ON!



DEMO 2025 GWM HAVAL JOLION ULTRA HYBRID **\$31,900** DRIVE AWAY*



DEMO 2025 GWM HAVAL H7 VANTA HYBRID **\$38,900** DRIVE AWAY*



DEMO 2025 GWM HAVAL H6 ULTRA HYBRID **\$40,485** DRIVE AWAY*



DEMO 2025 GWM HAVAL H6 ULTRA HYBRID **\$42,500** DRIVE AWAY*



DEMO 2025 GWM TANK 500 ULTRA PHEV **\$60,990** DRIVE AWAY*



DEMO 2025 GWM TANK 500 ULTRA HI4-T PHEV **\$71,890** DRIVE AWAY*



NEW 2025 GWM HAVAL JOLION PREMIUM HYBRID **\$29,400** DRIVE AWAY*



NEW 2025 GWM HAVAL JOLION LUX HYBRID **\$32,400** DRIVE AWAY*



NEW 2025 GWM HAVAL H6 LUX HYBRID **\$41,485** DRIVE AWAY*



NEW 2025 GWM HAVAL H6 ULTRA HYBRID **\$44,485** DRIVE AWAY*



NEW 2025 GWM TANK 300 ULTRA HI4-T PHEV **\$59,990** DRIVE AWAY*



NEW 2025 GWM TANK 500 ULTRA HI4-T PHEV **\$75,990** DRIVE AWAY*



All offers applicable to new and used vehicles are valid for vehicles currently in stock at the time of publication and must be sold and delivered between 1 and 30 June 2026. Excludes metallic paint. Vehicle colours may differ from those advertised. Available to private and retail customers only; excludes fleet and government buyers. This offer cannot be used in conjunction with any other offer. [*] Bartons 5 Year and 10 Year Warranty is available on all used and new in-stock vehicles, respectively, when purchased and delivered by 30 June 2026. Please refer to the warranty contract for full terms and conditions. The warranty product is issued by the motor dealer and administered by Integrity Car Care (ABN 58 056 621 893, AFSL 247069). The features described are subject to terms and conditions and do not detail all warranty exclusions. Some warranty features may overlap with your rights under the Australian Consumer Law. Nothing in the purchase of the warranty excludes, restricts or modifies your rights under the Australian Consumer Law. You are not required to pay for your rights and remedies under the Australian Consumer Law. \$1,000 fuel or Evie charge card offer is valid on new vehicles only and excludes demonstrators and used vehicles. [*1] Offer is provided upon full payment of the purchased vehicle. Choice of offer applies. BBG89889_0626



Awarded Australia's Best Solar System Design and Installation over 100kW

The Cheaper Home Battery Rebate is still available.



SCAN HERE FOR MORE INFO

Solar Power | Battery Storage
EV Chargers | Electrical
Switchboards | Air-Conditioning

SPEAK TO THE SOLAR AND BATTERY EXPERTS



Call today for an obligation free chat with a Goodhew Solar Consultant and see for yourself why more than 20,000 satisfied customers have already chosen to install a Goodhew Solar or Battery System on their home or business.



07 3286 1422 | www.goodhewsolar.com.au

Unit 15 & 16, 26-34 Weppin Street, Cleveland QLD 4163

Licence No: 78875

